

Model Name: GA-H110M-WW

rev:1.0

SHEET

TITLE

01	COVER SHEET
02	BOM & PCB MODIFY HISTORY
03	BLOCK DIAGRAM
04	CPU_LGA1151-A
05	CPU_LGA1151-B-DDR4
06	CPU_LGA1151-C
07	CPU_LGA1150-D
08	DDR4 CHANNEL A
09	DDR4 CHANNEL B
10	PCH_CLK BUFFER
11	PCH_DMI,USB,PCIE
12	PCH_MISC
13	PCH SATA,PCIE,SATA_EXPRESS
14	PCH_PWR,GND
15	Dual BIOS
16	ITE 8628 LPC IO
17	HWM
18	FAN CTRL--SIO
19	PCI EXPRESS*16 SLOT
20	PCI EXPRESS*1 SLOT
21	SATA
22	ISL95858_856 PWM
23	ISL95858_856 MOS_VCORE
24	ISL95858_856 MOS_VCCGT
25	VCCSA_VCCIO_VCCPLL
26	RT8237_DDR_VDDQ
27	RT8068_VPP

SHEET

TITLE

28	RT8237_PCH_VCC1_0_PCH
29	DISCRETE POWER
30	ATX POWER , A_-PROCHOT
31	KB_MS_USB
32	RTD2168 - DP to VGA - IC
33	RTD2168 - DP to VGA - Conn
34	R_USB30
35	REALTEK - RTL8111G
36	USB20_LAN CONNECTOR-RTL8111G
37	Realtek ALC887
38	REAR AUDIO JACK
39	F_USB30
40	F_USB20
41	COM , LPT , TPM
42	F_PANEL
43	EMI/ESD
44	IT8892E/JX
45	PCI SLOT
46	POWER MAP
47	TABLE LIST
48	NTC MAP
49	
50	
51	



Gigabyte Technology

Title		
Cover Sheet		
Size	Document Number	Rev
Custom	GA-H110M-WW	1.0
Date:	Thursday, July 07, 2016	Sheet 1 of 49

rev:1.0

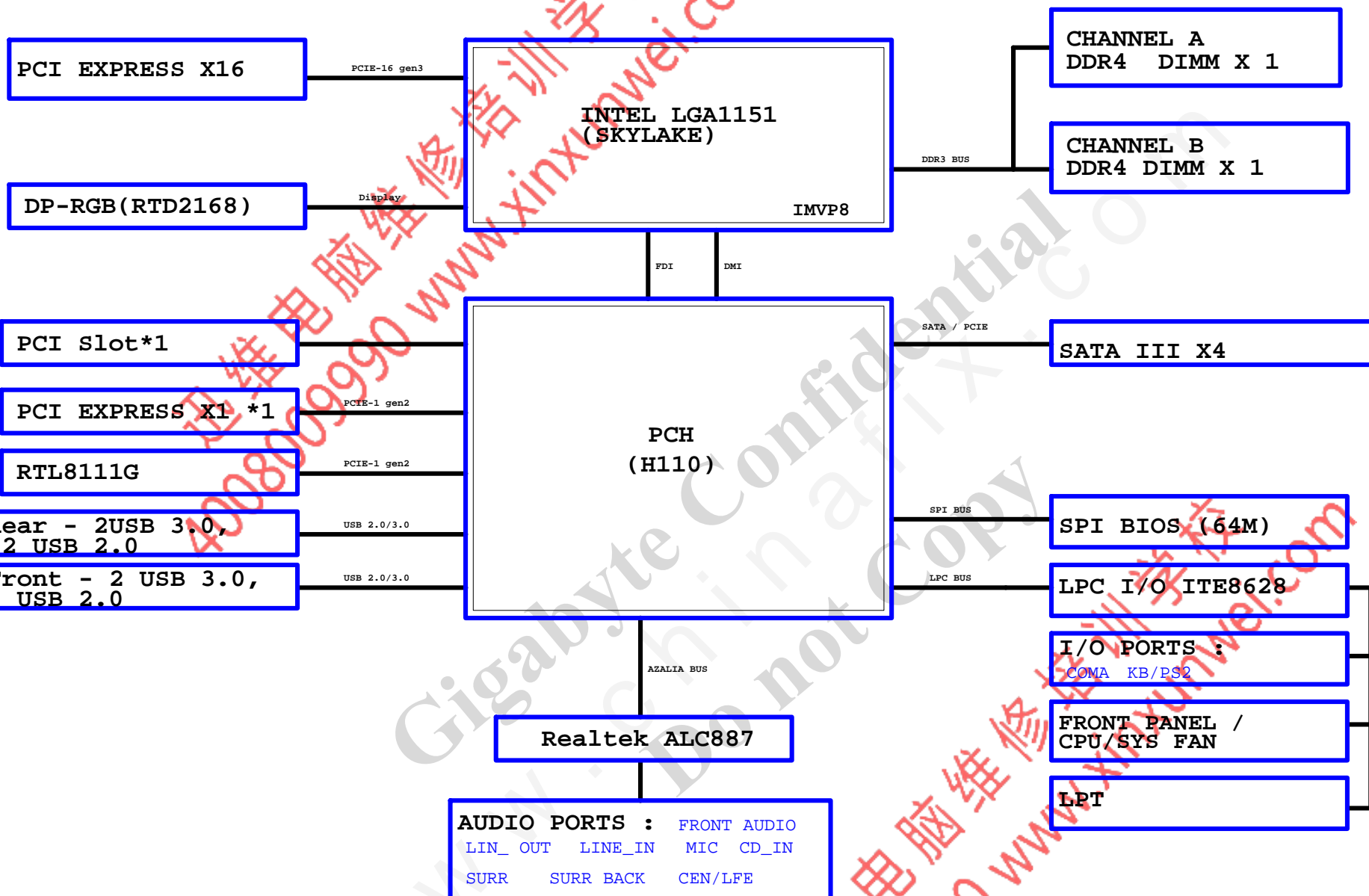
**CHINA**

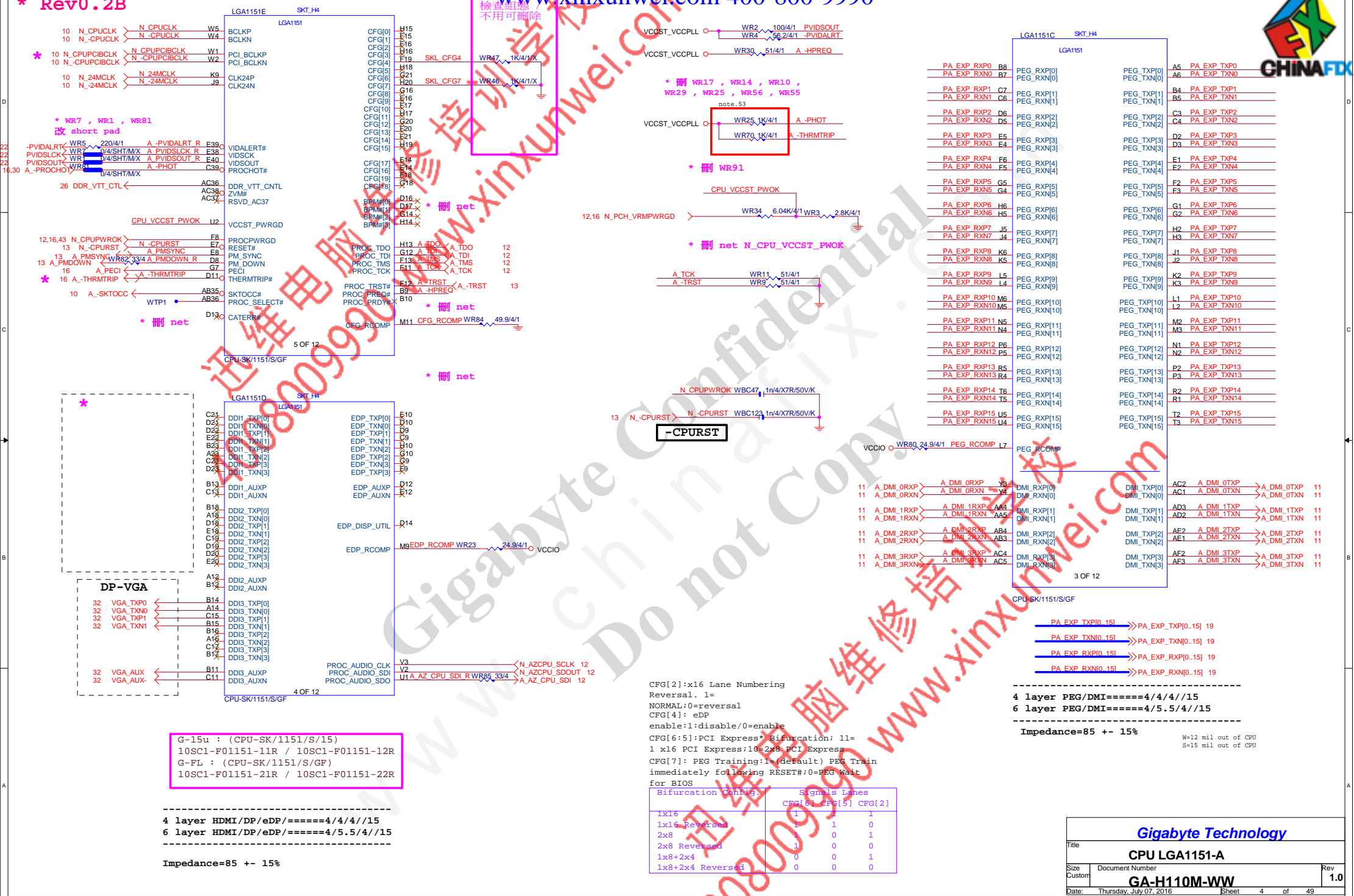
## 2016/07/04

[illegible]

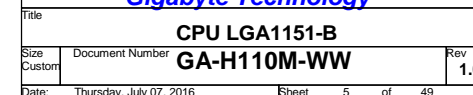
# BLOCK DIAGRAM

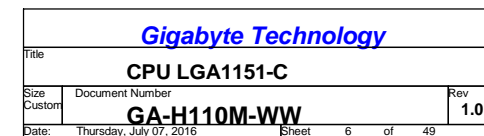
www.xinxunwei.com 400-800-9990

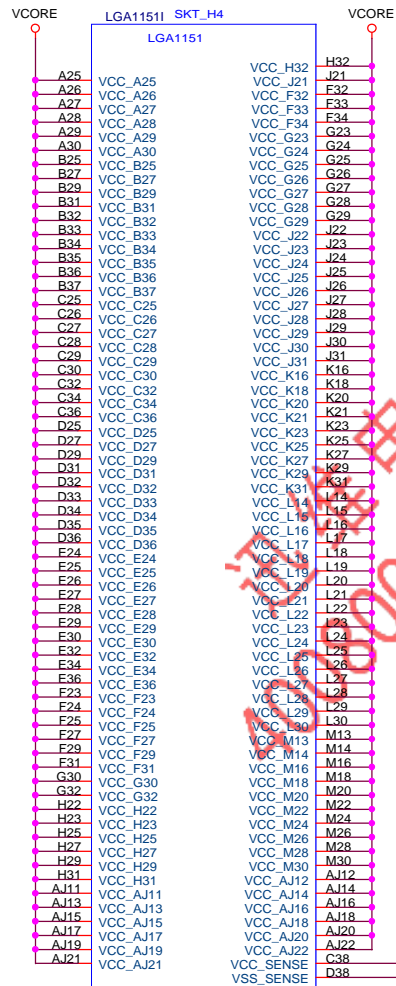




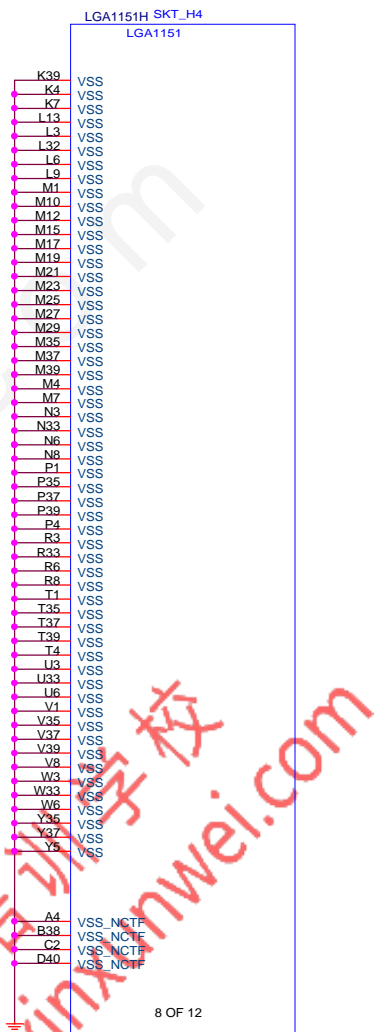
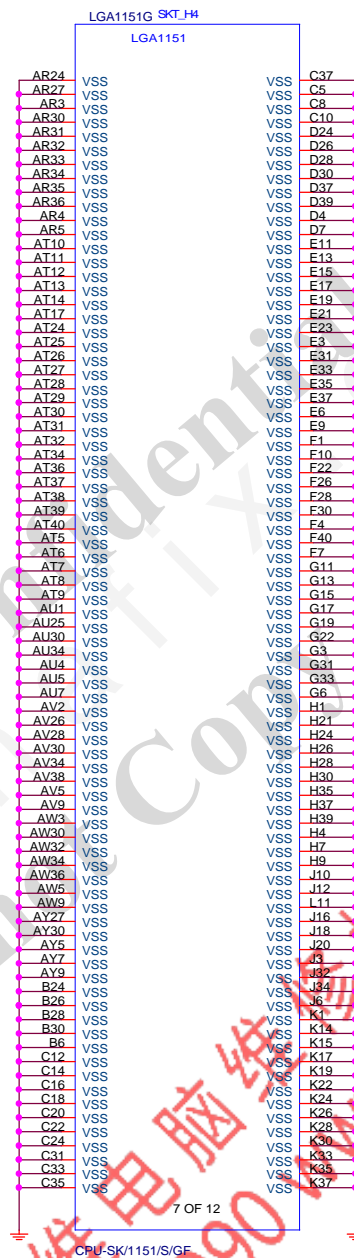
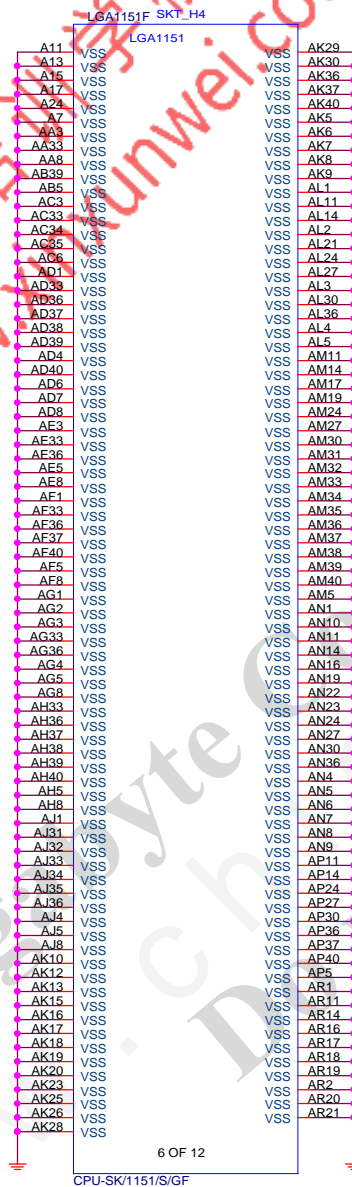








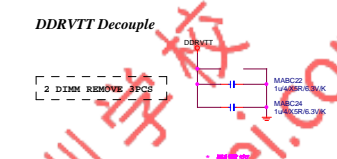
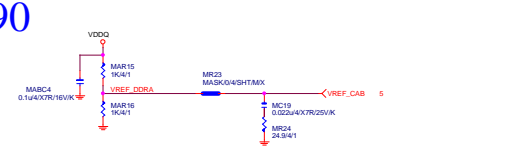
\* 删 Vcore 电容



Gigabyte Technology

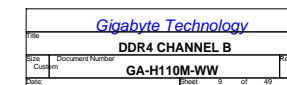
Title		
CPU LGA1151-C		
Size	Document Number	Rev
Custom	GA-H110M-WW	1.0
Date:	Thursday, July 07, 2016	Sheet 7 of 49

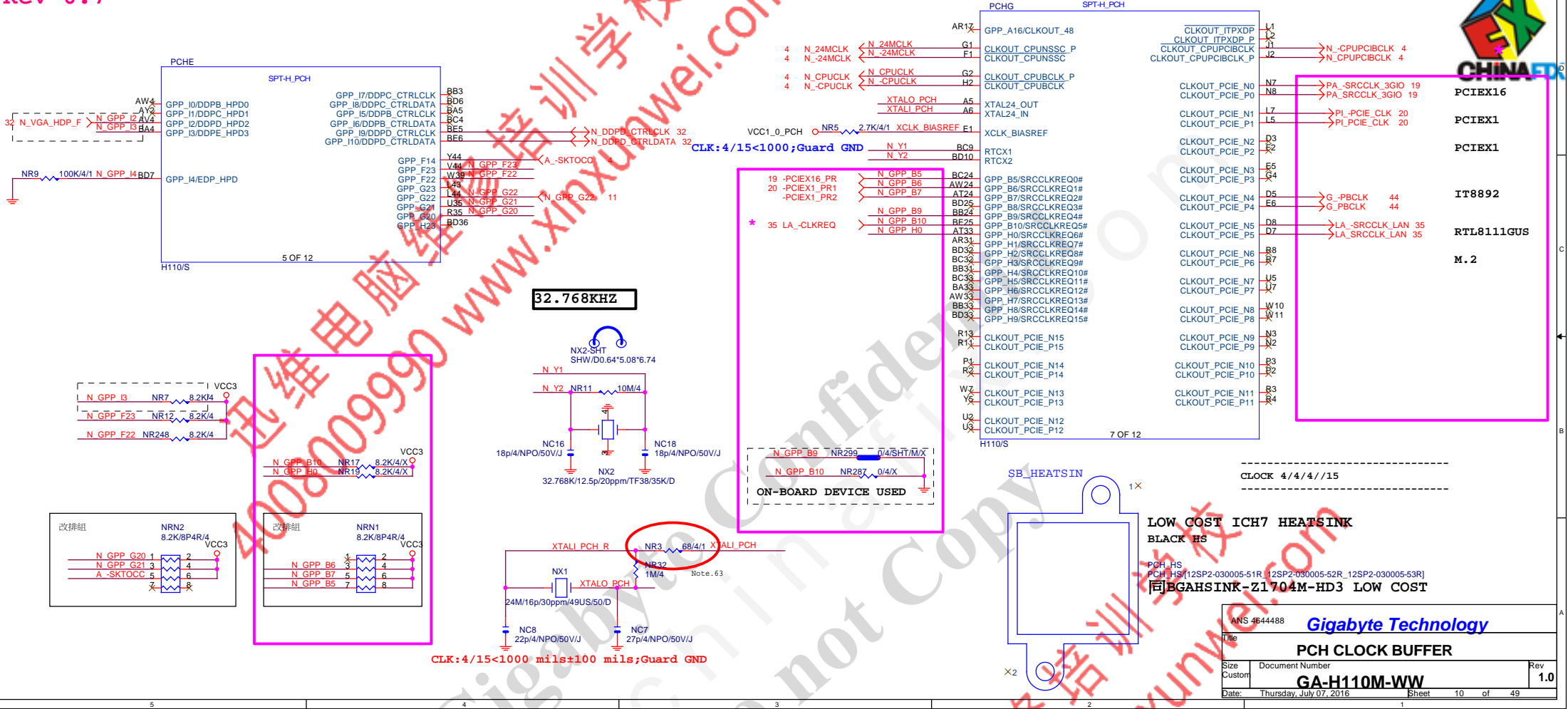


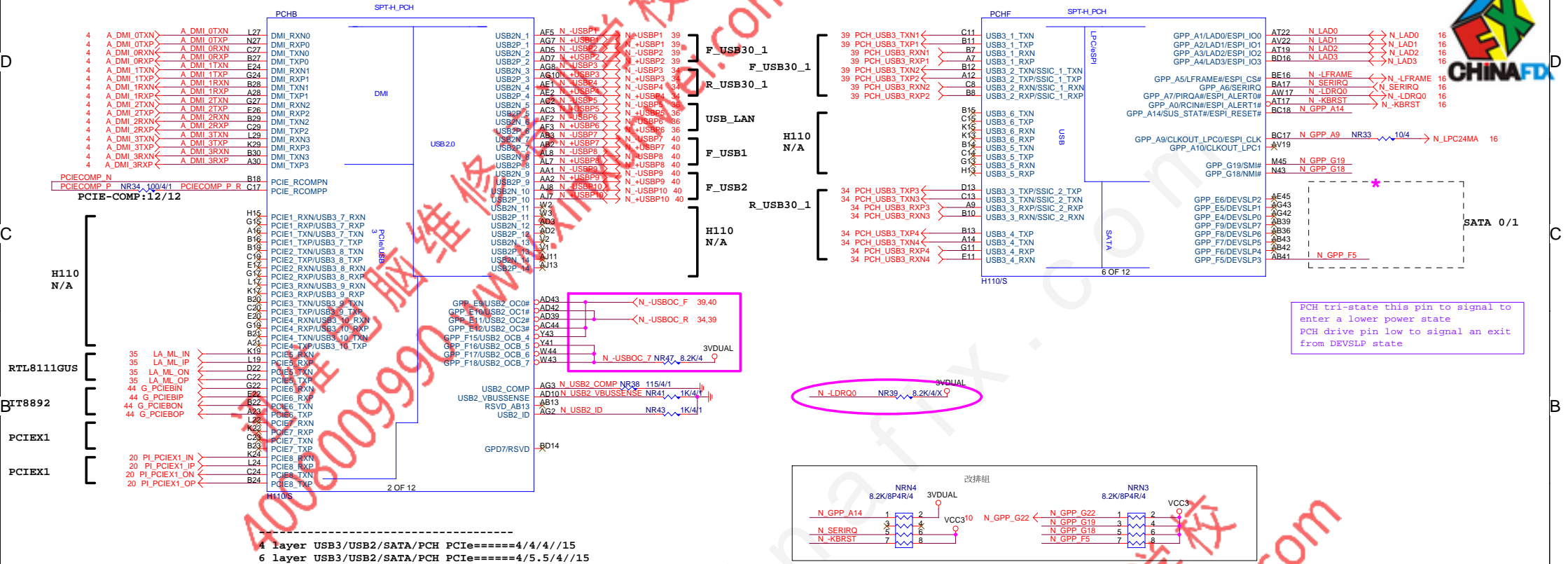


Title			
Gigabyte Technology			
DDR4 CHANNEL A			
Size	Document Number		Rev
Custom	GA-H110M-WW		1.0
Date	Sheet		8 of 49

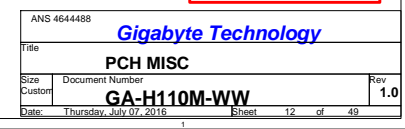




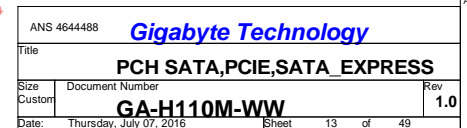


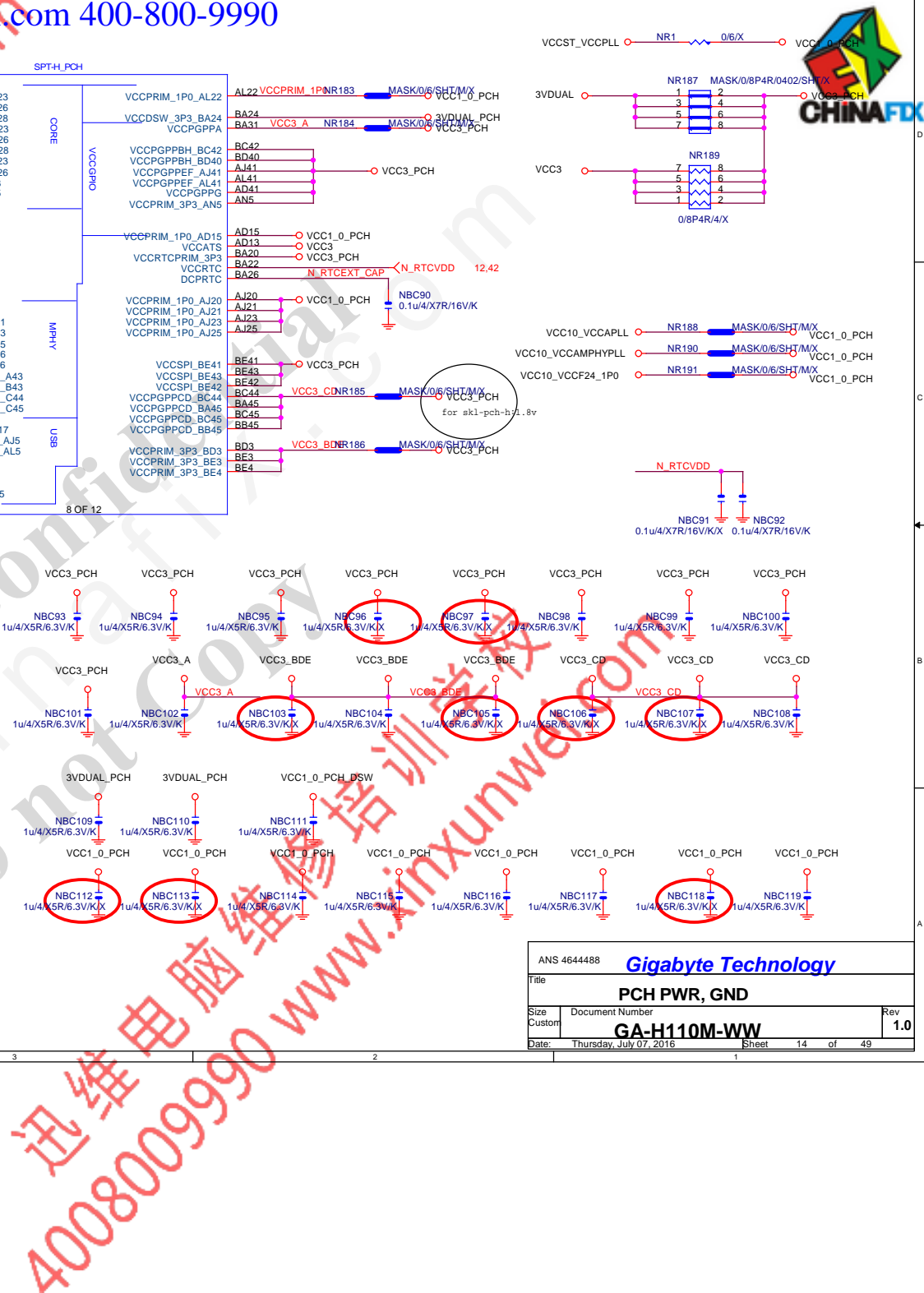


ANS 4644488	<b>Gigabyte Technology</b>
Title	<b>PCH DMI,USB,PCIE</b>
Size	Document Number
Custom	<b>GA-H110M-WW</b>
Date	Thursday, July 07, 2016
Sheet	11 of 49
Rev	1.0







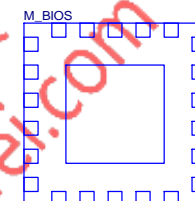
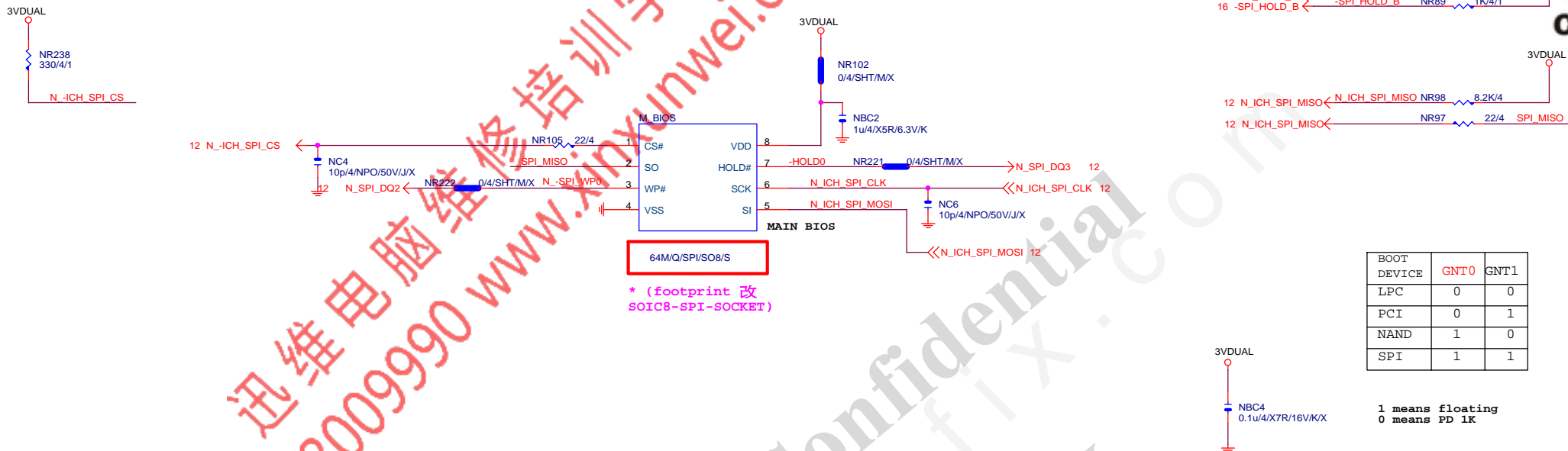


Rev 0.1

BIOS

www.xinxunwei.com 400-800-9990

MOSI For DMI RX Termination Voltage



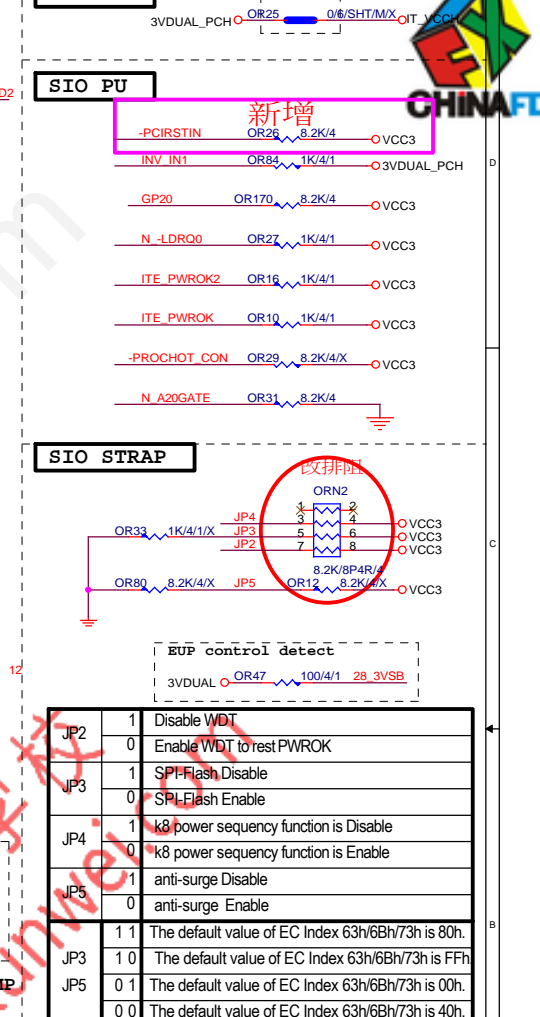
LCP/G-FL/1.27mm/200MIL/WHITE[10SL2-000008-31R]X

\* 試產先上，PVT 移除

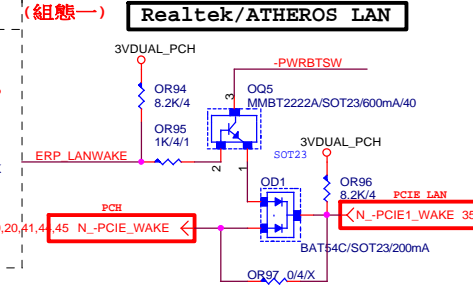
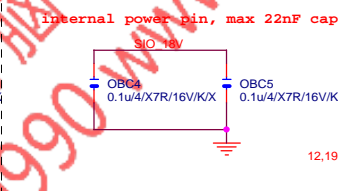
BIOS PH

Gigabyte Technology

Title		BIOS	
Size	Document Number	GA-H110M-S2V	Rev
Custom			1.0
Date:	Thursday, July 07, 2016	Sheet	15 of 47



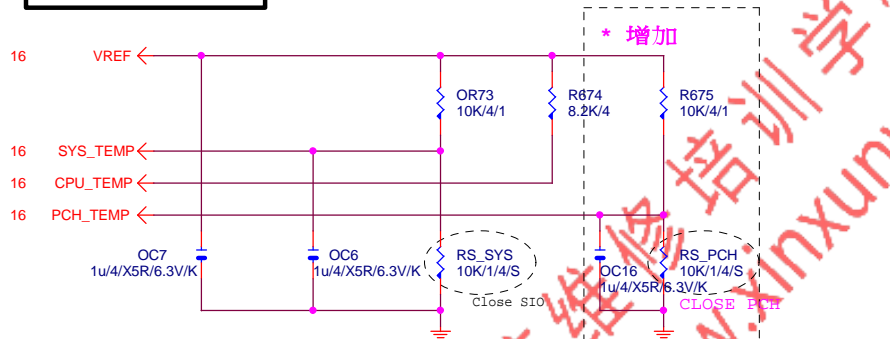
IT8620E GPIO問題匯整	
PIN 50	GP26-第一次接上POWER時會拉 Lo
PIN 90/91	DEFAULT為HDLED FUNCTION GP93 BYPASS TO GP92 高溫時 GP92 會被拉Lo(ITE BUG)
PIN 108	GP40--- POWER ON 時會拉 Lo
PIN 111/112	MOUSE 跟FAN6 FUNCTION 擇一使用, 不然會互相干擾
PIN 22	PIN22, 需高於3V, 若低於 該部分COM COM2及LPT裝置 轉碼器會異常動作。





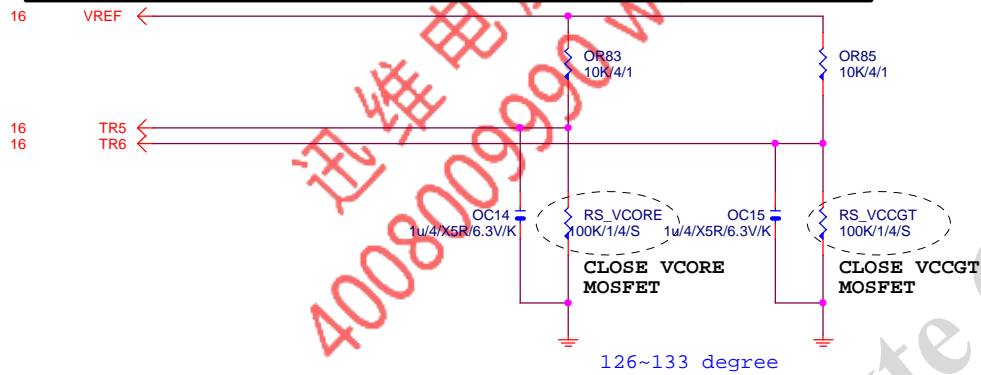
## TEMP H/W MONITOR

REV 1.04



## RS\_VCORE, RS\_VCCGT, CLOSE CPU\_VCORE &amp; VCCGT MOSFET

-PROCHOT:有mos heartsink不用prochot function

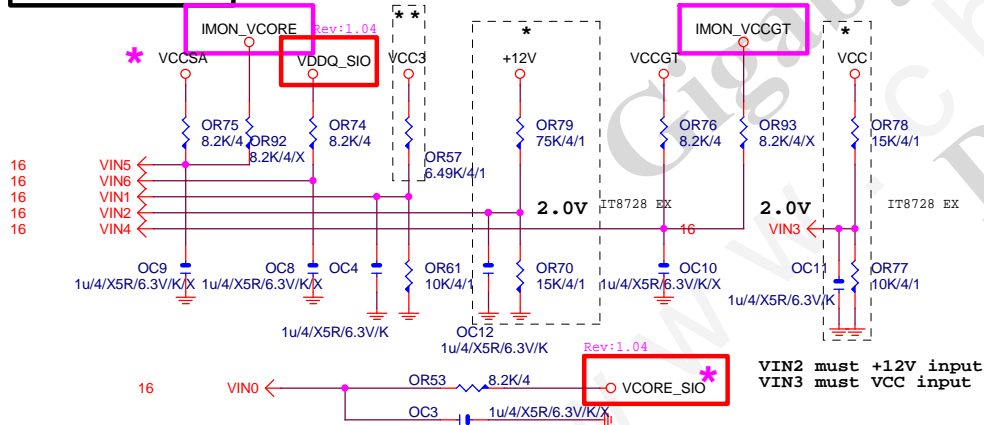


## VOLTAGE-- H/W MONITOR

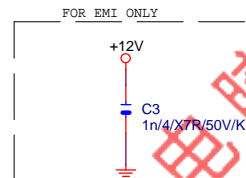
Connect to PWM

\* IT8728 BX  
\*\* IT8728 CX

Connect to PWM



The division voltage of VIN2 &amp; VIN3 must be around 2.9V



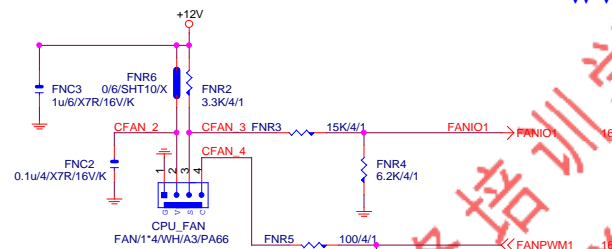
Gigabyte Technology

Title			HWM,KB/MS, FAN CTRL	
Size	Document Number	Rev		
Custom	GA-H110M-WW	1.0		
Date:	Thursday, July 07, 2016	Sheet	17	of 49



# CPU SMART FAN

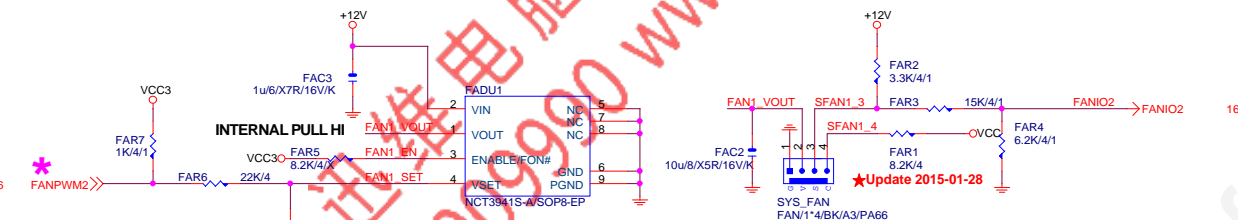
Rev: 0.53



# SYSTEM FAN1

## Linear SYS\_FAN

Enable Function (NCT3941S)  
Full Turn On Function (NCT3941S-A)

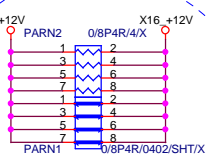


Gigabyte Technology

Title			FAN CTRL
Size	Document Number	Rev	
Custom	GA-H110M-WW	1.0	
Date:	Thursday, July 07, 2016	Sheet	18 of 49



+12V\_protect  
short-wire test



PA\_EXP\_RXP0\_15I >> PA\_EXP\_RXP[0..15] 4  
PA\_EXP\_RXN0\_15I >> PA\_EXP\_RXN[0..15] 4  
PA\_EXP\_TXP0\_15I >> PA\_EXP\_TXP[0..15] 4  
PA\_EXP\_TXN0\_15I >> PA\_EXP\_TXN[0..15] 4

PA_EXP_TXP0	PAC5	0.22u/4/X5R/6.3V/K	PA_EXP_TXP0_C
PA_EXP_TXN0	PAC4	0.22u/4/X5R/6.3V/K	PA_EXP_TXN0_C
PA_EXP_TXP1	PAC6	0.22u/4/X5R/6.3V/K	PA_EXP_TXP1_C
PA_EXP_TXN1	PAC7	0.22u/4/X5R/6.3V/K	PA_EXP_TXN1_C
PA_EXP_TXP2	PAC8	0.22u/4/X5R/6.3V/K	PA_EXP_TXP2_C
PA_EXP_TXN2	PAC9	0.22u/4/X5R/6.3V/K	PA_EXP_TXN2_C
PA_EXP_TXP3	PAC10	0.22u/4/X5R/6.3V/K	PA_EXP_TXP3_C
PA_EXP_TXN3	PAC11	0.22u/4/X5R/6.3V/K	PA_EXP_TXN3_C
PA_EXP_TXP4	PAC12	0.22u/4/X5R/6.3V/K	PA_EXP_TXP4_C
PA_EXP_TXN4	PAC13	0.22u/4/X5R/6.3V/K	PA_EXP_TXN4_C
PA_EXP_TXP5	PAC14	0.22u/4/X5R/6.3V/K	PA_EXP_TXP5_C
PA_EXP_TXN5	PAC15	0.22u/4/X5R/6.3V/K	PA_EXP_TXN5_C
PA_EXP_TXP6	PAC16	0.22u/4/X5R/6.3V/K	PA_EXP_TXP6_C
PA_EXP_TXN6	PAC17	0.22u/4/X5R/6.3V/K	PA_EXP_TXN6_C
PA_EXP_TXP7	PAC18	0.22u/4/X5R/6.3V/K	PA_EXP_TXP7_C
PA_EXP_TXN7	PAC19	0.22u/4/X5R/6.3V/K	PA_EXP_TXN7_C
PA_EXP_TXP8	PAC20	0.22u/4/X5R/6.3V/K	PA_EXP_TXP8_C
PA_EXP_TXN8	PAC21	0.22u/4/X5R/6.3V/K	PA_EXP_TXN8_C
PA_EXP_TXP9	PAC22	0.22u/4/X5R/6.3V/K	PA_EXP_TXP9_C
PA_EXP_TXN9	PAC23	0.22u/4/X5R/6.3V/K	PA_EXP_TXN9_C
PA_EXP_TXP10	PAC24	0.22u/4/X5R/6.3V/K	PA_EXP_TXP10_C
PA_EXP_TXN10	PAC25	0.22u/4/X5R/6.3V/K	PA_EXP_TXN10_C
PA_EXP_TXP11	PAC26	0.22u/4/X5R/6.3V/K	PA_EXP_TXP11_C
PA_EXP_TXN11	PAC27	0.22u/4/X5R/6.3V/K	PA_EXP_TXN11_C
PA_EXP_TXP12	PAC28	0.22u/4/X5R/6.3V/K	PA_EXP_TXP12_C
PA_EXP_TXN12	PAC29	0.22u/4/X5R/6.3V/K	PA_EXP_TXN12_C
PA_EXP_TXP13	PAC30	0.22u/4/X5R/6.3V/K	PA_EXP_TXP13_C
PA_EXP_TXN13	PAC31	0.22u/4/X5R/6.3V/K	PA_EXP_TXN13_C
PA_EXP_TXP14	PAC32	0.22u/4/X5R/6.3V/K	PA_EXP_TXP14_C
PA_EXP_TXN14	PAC33	0.22u/4/X5R/6.3V/K	PA_EXP_TXN14_C
PA_EXP_TXP15	PAC34	0.22u/4/X5R/6.3V/K	PA_EXP_TXP15_C
PA_EXP_TXN15	PAC35	0.22u/4/X5R/6.3V/K	PA_EXP_TXN15_C

PCIE16:16/5/5/5/16

PCI-E REV:1.1--&gt; 2.5GHZ

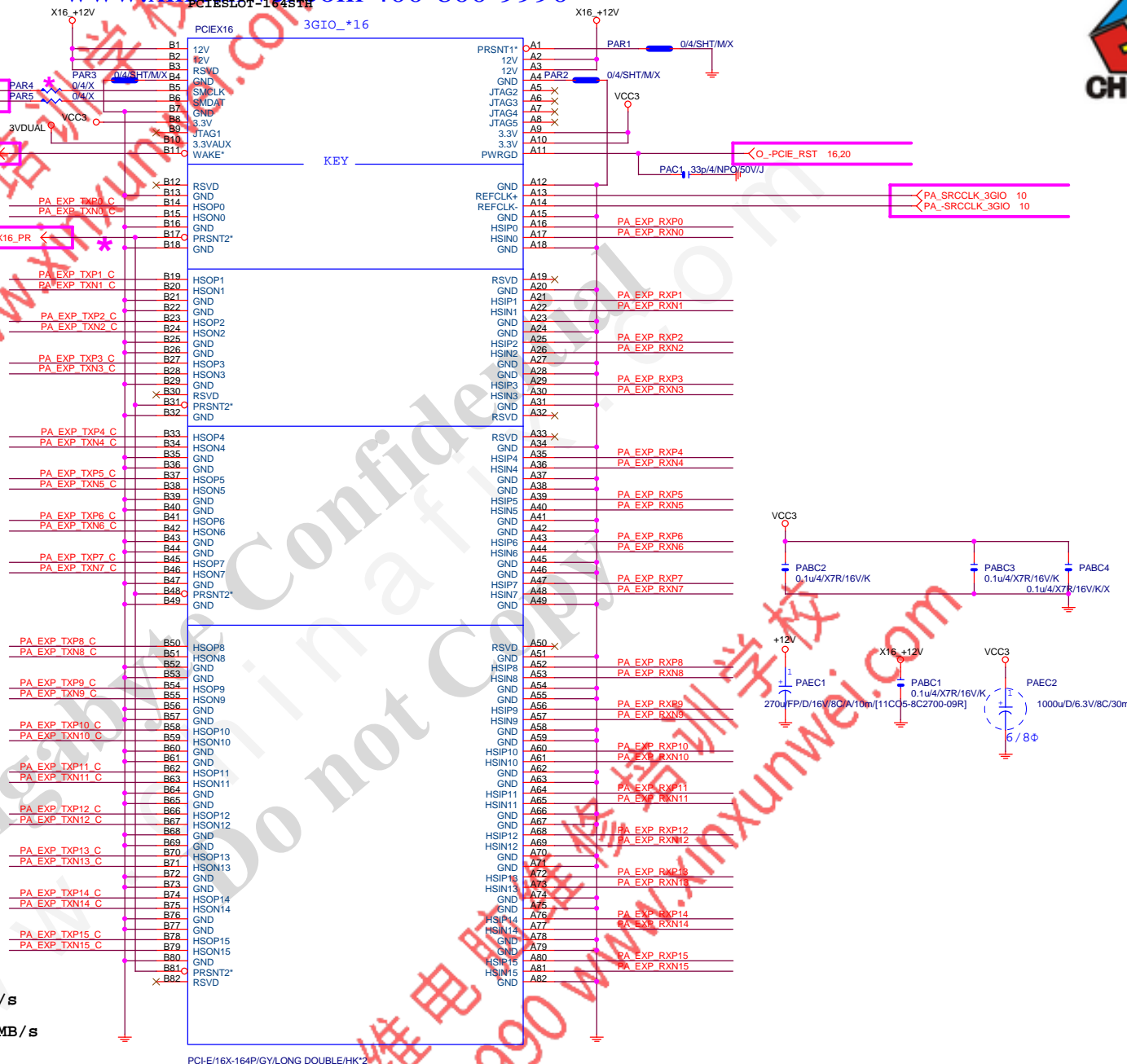
PCE-E X1(單向) BANDWIDTH=2.5GHz\*(8b/10b)=2Gb/s=250MB/s

PCE-E X1(雙向) BANDWIDTH=2.5GHz\*(8b/10b)X2=4Gb/s=500MB/s

PCE-E X16(單向) BANDWIDTH=2.5GHz\*(8b/10b)X16=32Gb/s=4GB/s

PCE-E X16(雙向) BANDWIDTH=2.5GHz\*(8b/10b)X16X2=64Gb/s=8GB/s

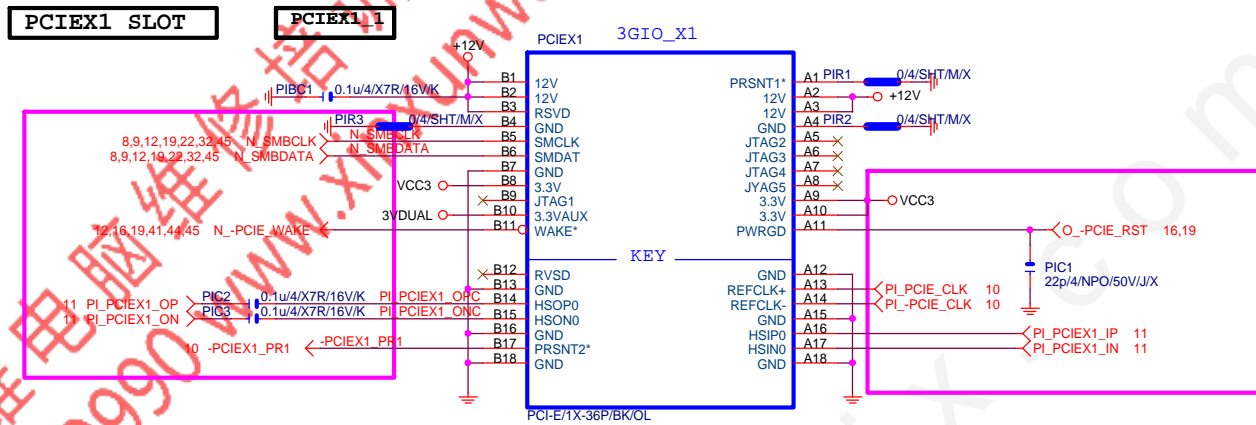
PCI-E REV:2.0--&gt; 5GHZ



PCI-E/16x164P/GY/LONG DOUBLE/HK'2

Gigabyte Technology

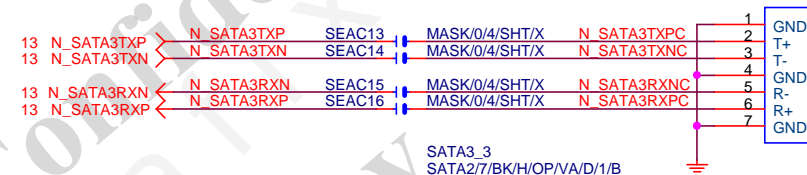
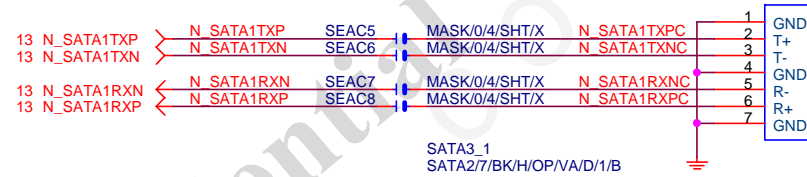
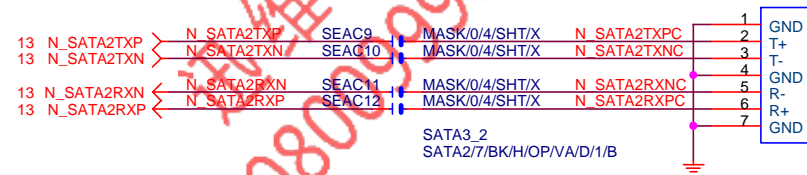
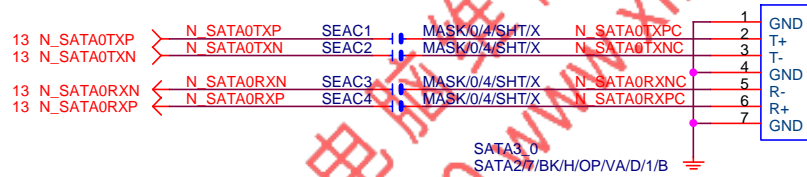
Title			PCI EXPRESS * 16	
Size	Document Number	GA-H110M-WW		Rev 1.0
Date:	Thursday, July 07, 2016	Sheet 19	of 49	



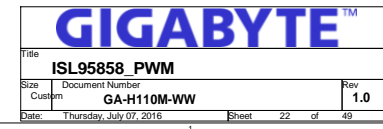
Gigabyte Technology

Title				
PCIE_X1 1,2				
Size	Document Number			Rev
Custom	GA-H110M-WW			1.0
Date:	Thursday, July 07, 2016	Sheet	20 of 49	



**Gigabyte Technology**Title  
**SATA EXPRESS**Size Custom Document Number  
**GA-H110M-WW**Rev  
**1.0**

Date: Thursday, July 07, 2016 Sheet 21 of 49

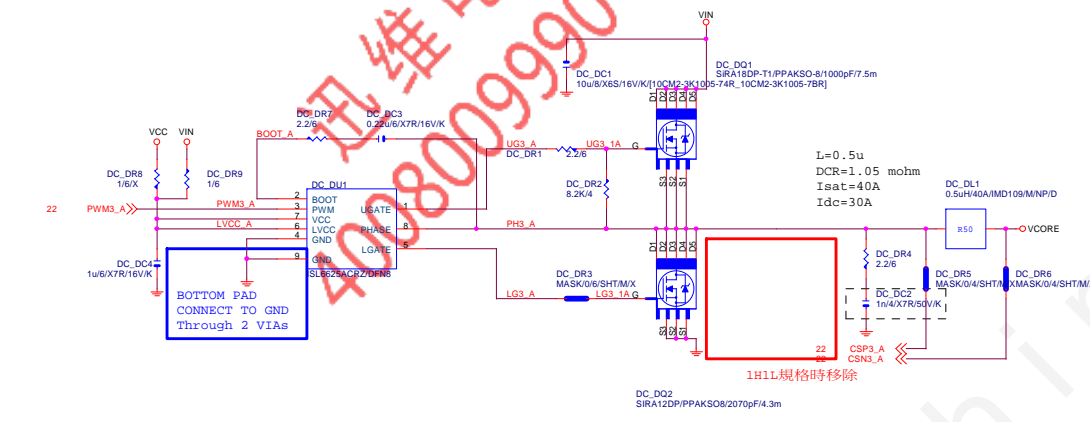
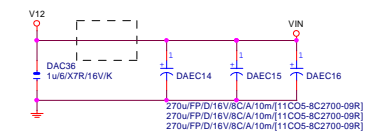




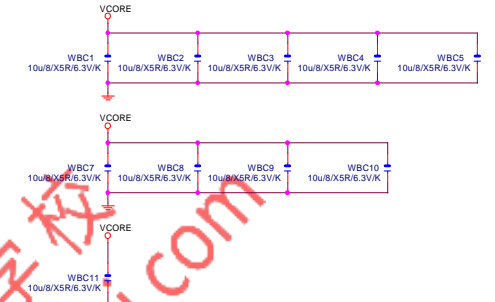
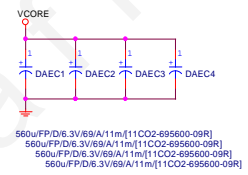
VCORE



VIN CAP 270u\*3PCS

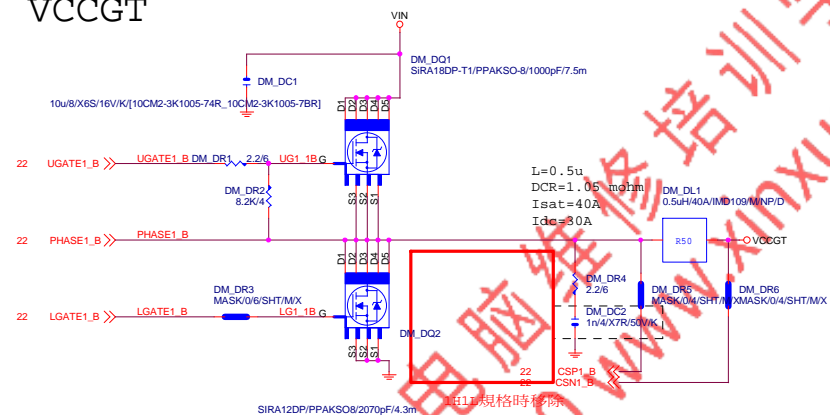


VCORE CAP 560u\*4PCS 22u\*10PCS

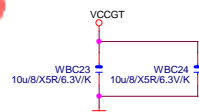
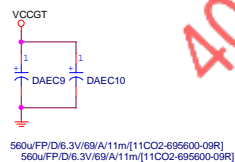


GIGABYTE™			
Title			
ISL95858_MOS			
Size	Document Number	Rev	
Custm	GA-H110M-WW	1.0	
Date:	Thursday, July 07, 2016	Sheet	23 of 49

## VCCGT



## VCCGT CAP

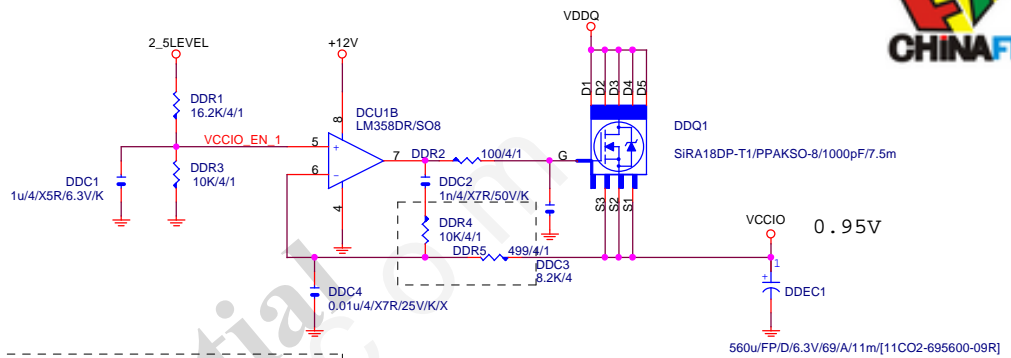
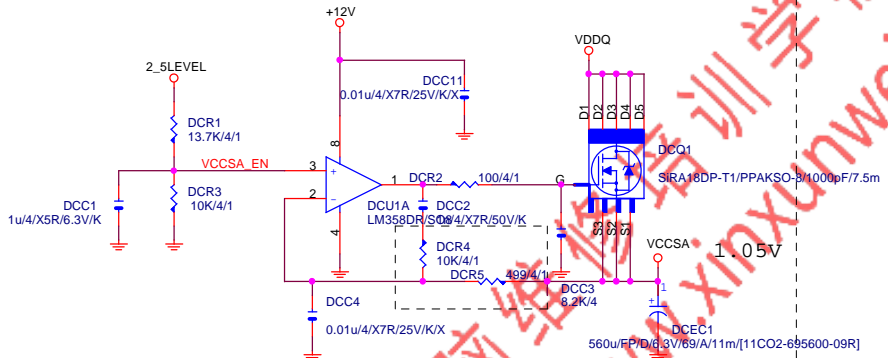
560u\*2PCS  
22u\*2PCS

GIGABYTE™

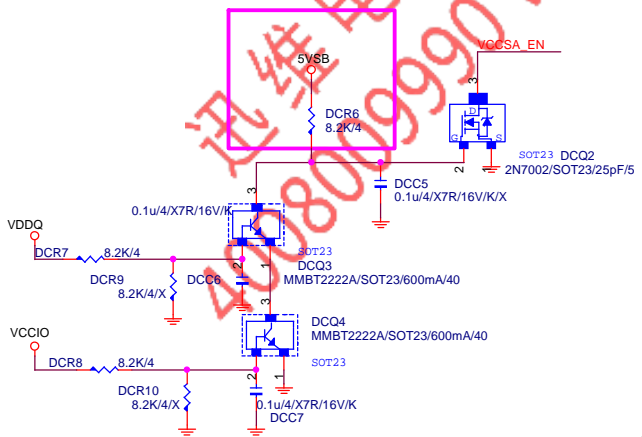
ISL95858\_MOS

Title	ISL95858_MOS		Rev	1.0
Size	Custom	Document Number	GA-H110M-WW	
Date:	Thursday, July 07, 2016	Sheet	24	of 49

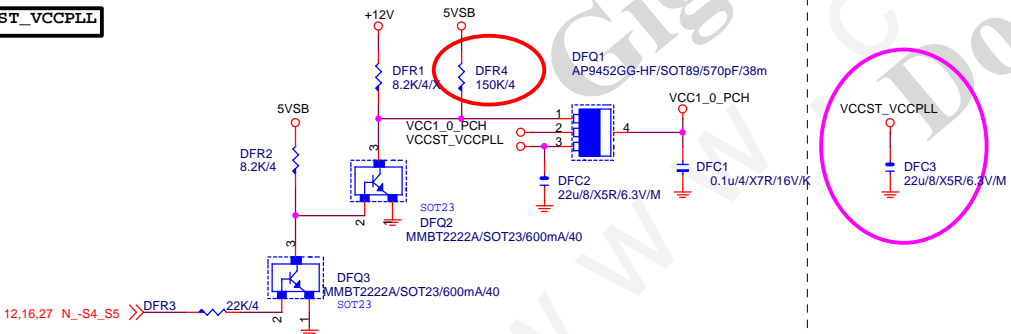




VCCIO\_EN 1 DDR10 0/4/SHT/M/X VCCIO\_EN 16  
Connect to IT8620

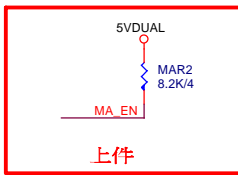


VCCST\_VCCPLL

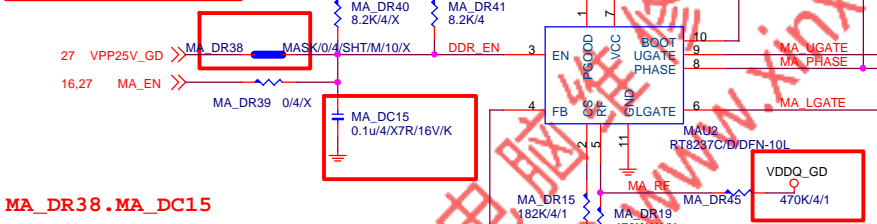


GIGABYTE™			
Title VCCSA_VCCIO			
Size	Document Number		Rev
Custom	GA-H110M-WW		1.0
Date:	Thursday, July 07, 2016	Sheet	25 of 49

上件



上件

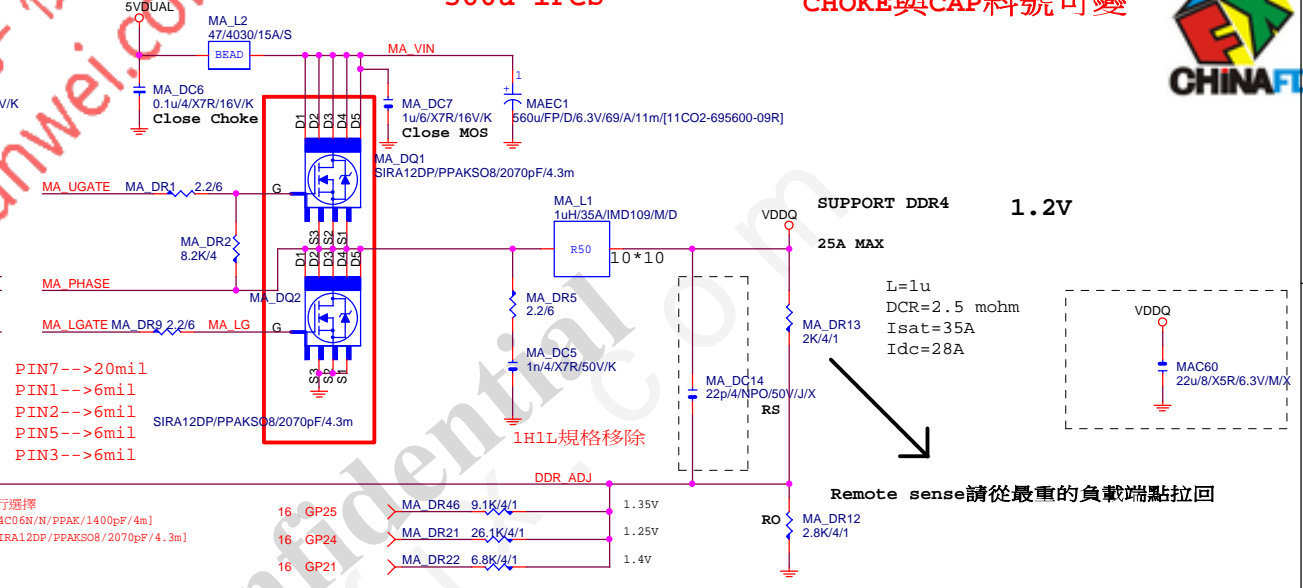


MA\_DR38.MA\_DC15

VPP\_25V使用8120.8068A.RT8237時上件



FS=290K MOSFET請依MOSFET使用規則,自行選擇  
ON-->10IF9-040406-10R[NTMFS4C06N/N/PPAK/1400pF/4m]  
OCP=40A VISHAY-->10IF9-040012-10R[SIRA12DP/PPAKS08/2070pF/4.3m]



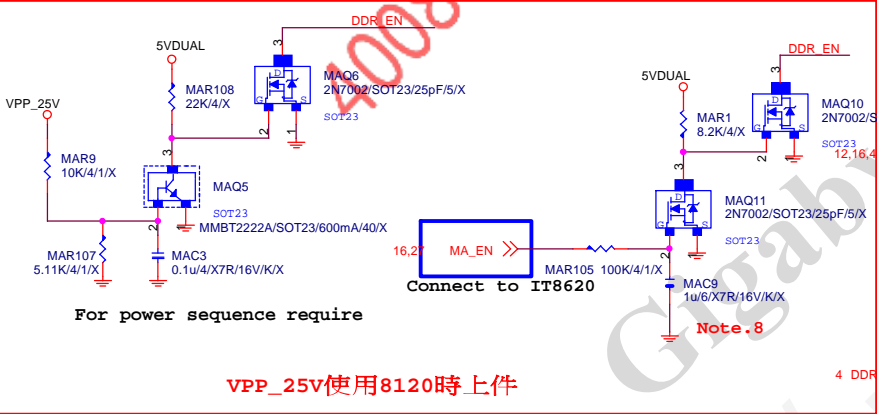
SUPPORT DDR4 1.2V

25A MAX

L=1u  
DCR=2.5 mohm  
Isat=35A  
Idc=28A

Remote sense請從最重的負載端點拉回

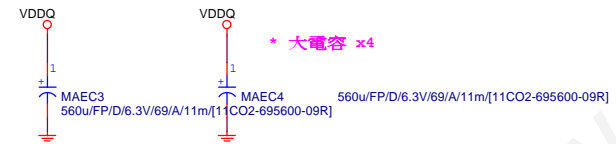
CLOSE TO DDR POWER PLANE



For power sequence require

VPP\_25V使用8120時上件

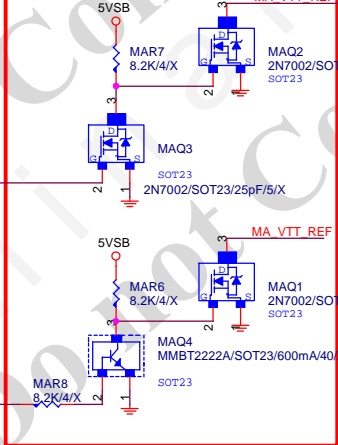
DDR CAP 560u\*4PCS 22u\*2PCS



\* 大電容 x4

560u/FP/D/6.3V/69/A/11m/[11CO2-695600-09R]

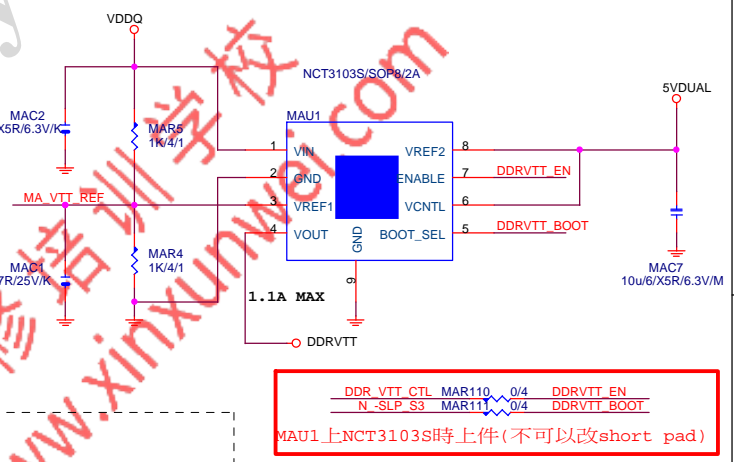
MAU1上RT9045時上件(不可MASK)



DDRVTT CAP

\* 大電容 x0

**DDRVTT**



DDR VTT CTL	MAR110	0/4	DDRVTT EN
N -SLP S3	MAR111	0/4	DDRVTT BOOT

MAU1上NCT3103S時上件(不可以改short pad)

# GIGABYTE™

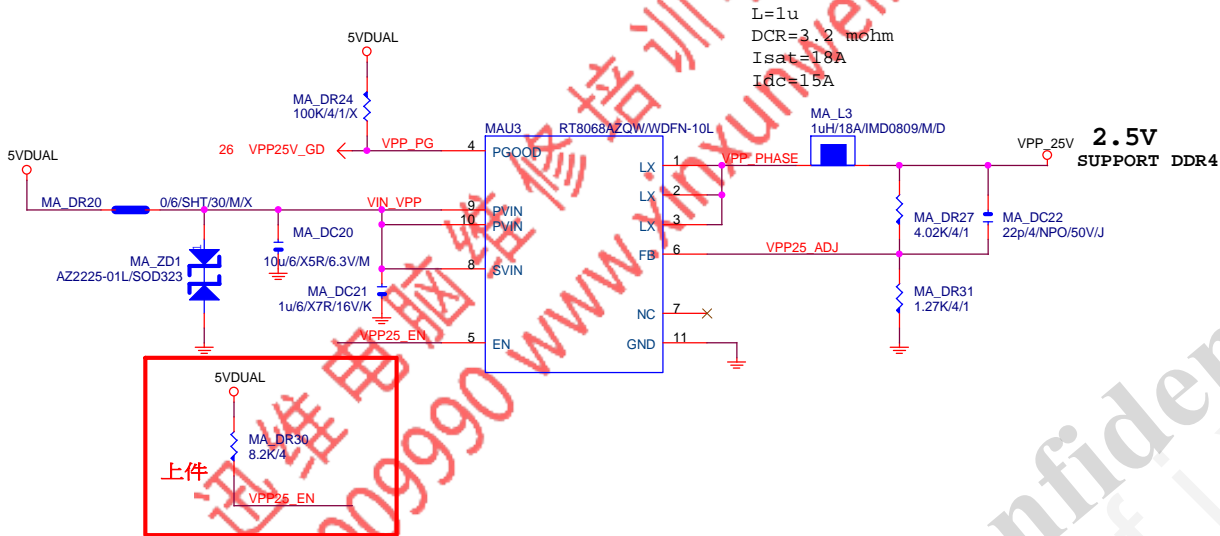
Title	RT8237_DDR4 POWER
-------	-------------------

Size	Document Number	Rev
Custom	<b>GA-H110M-WW</b>	<b>1.0</b>
Date:	Thursday, July 07, 2016	Sheet 26 of 49



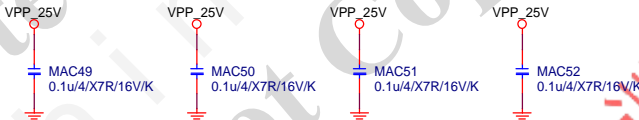
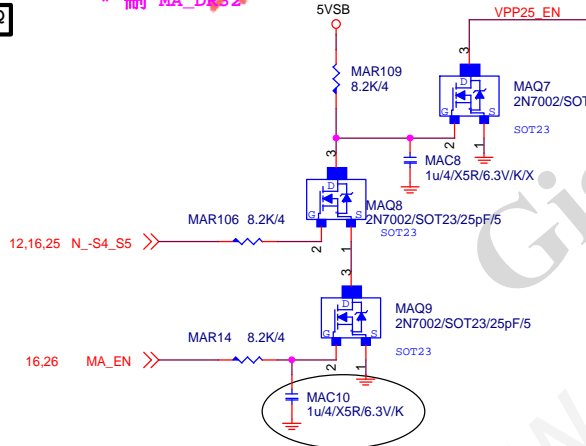
VPP\_25V

CHOKE與CAP料號可變



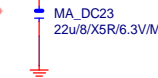
PWR\_SEQ

\* 刪 MA\_DR32



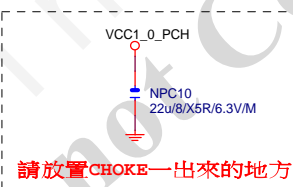
VPP CAP 22u\*1PCS

\* 大電容 22u



GIGABYTE™

Title				RT9018_VPP25 POWER			
Size		Document Number				Rev	
Custom		GA-H110M-WW				1.0	
Date:		Thursday, July 07, 2016		Sheet		27 of 49	


$$.704 * (1 + R_S / R_O) = V_{out}$$


請放置CHOKE一出來的地方

# GIGABYTE™

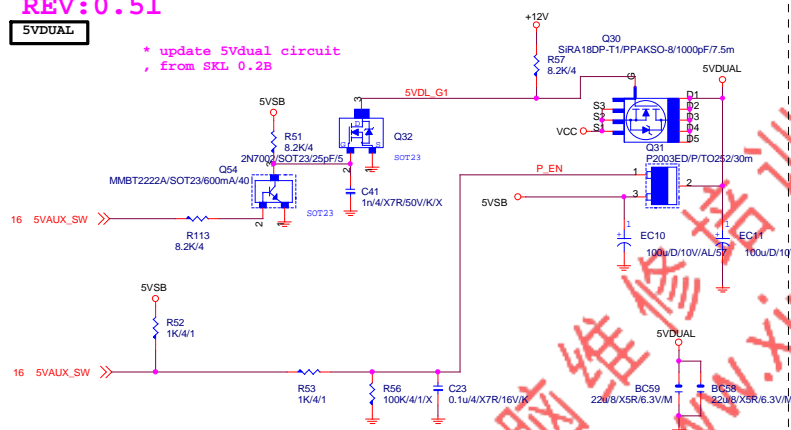
Title <b>RT8237_PCH POWER</b>			
Size Custom	Document Number <b>GA-H110M-WW</b>	Rev <b>1.0</b>	
Date:	Thursday, July 07, 2016	Sheet	28 of 49



REV: 0.51

5VDUAL

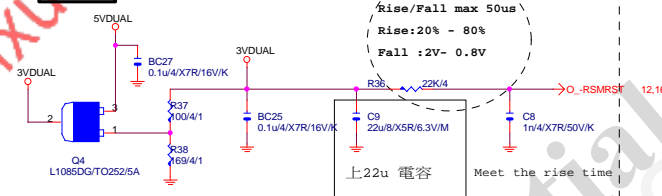
\* update 5Vdual circuit  
from SKL 0.2B



www.xinxunwei.com 400-800-9990



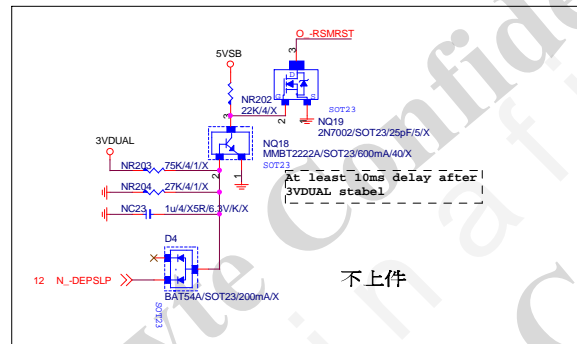
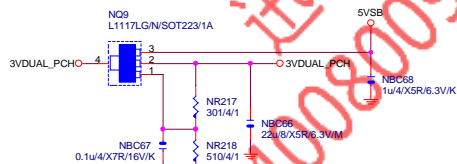
3VDUAL



Rise/Fall max 50us  
Rise: 20% - 80%  
Fall: 2V - 0.8V

上22u 电容  
Meet the rise time

3VDUAL\_PCH



At least 10ms delay after  
3VDUAL stable

不上件

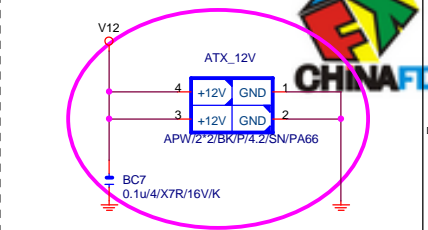
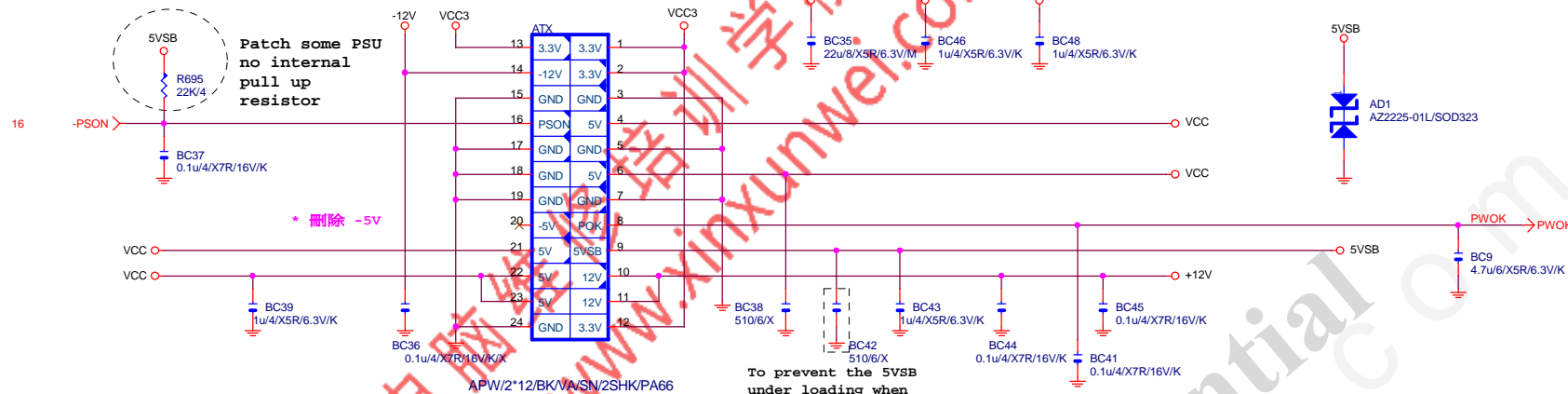
Gigabyte Technology

Title			
DISCRETE POWER			
Size	Document Number		Rev
Custom	GA-H110M-WW		1.0
Date:	Thursday, July 07, 2016	Sheet	29 of 49

# ATXX24 POWER CONNECTOR

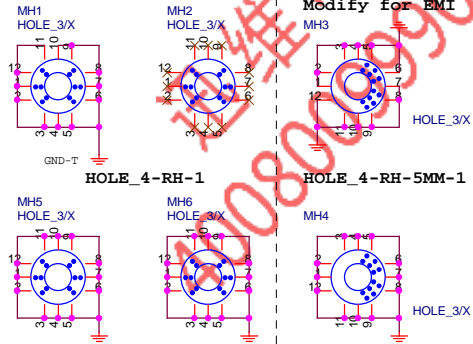
www.xinxunwei.com 400-800-9990

# ATXX4 POWER CONNECTOR

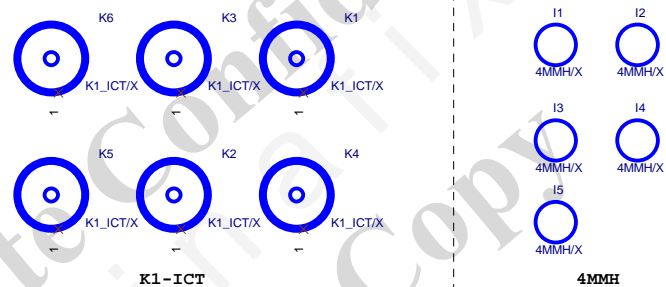


## 螺絲孔

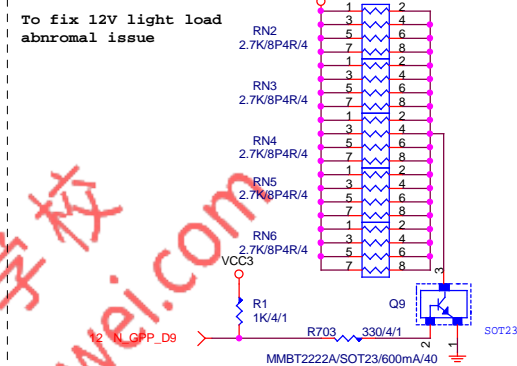
MH1:GND-T FOR EMI TEST驗證



## 固定孔/光學點

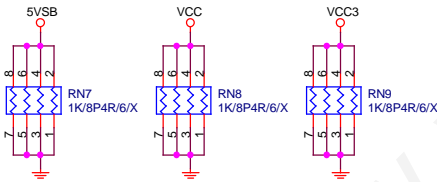


## +12V DUMMY LOAD

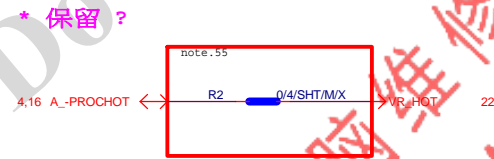


【技術通報R&D技術通報153】

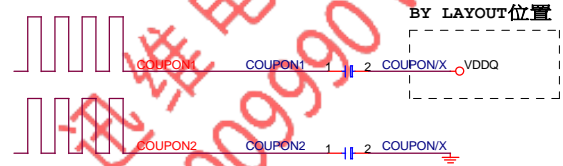
## DUMMY LOAD



## -PROHOT



## COUPON



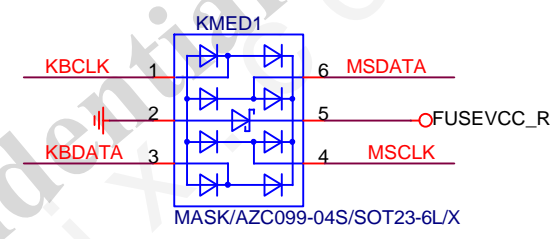
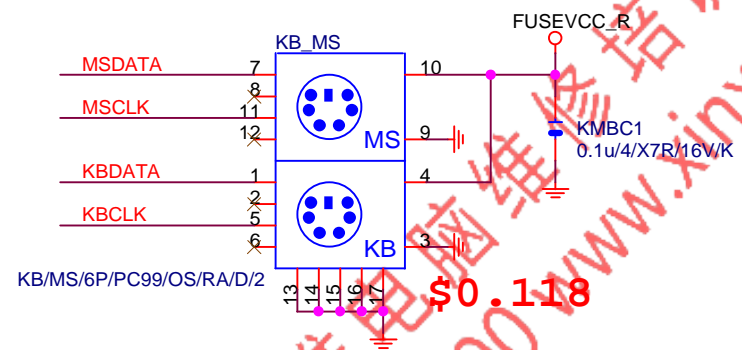
Gigabyte Technology

Title		
ATX POWER CONNECTOR		
Size	Document Number	Rev
Custom	GA-H110M-WW	1.0
Date:	Thursday, July 07, 2016	Sheet 30 of 49



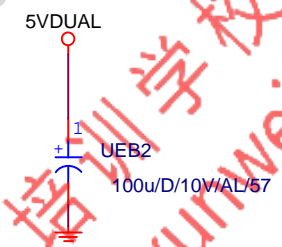
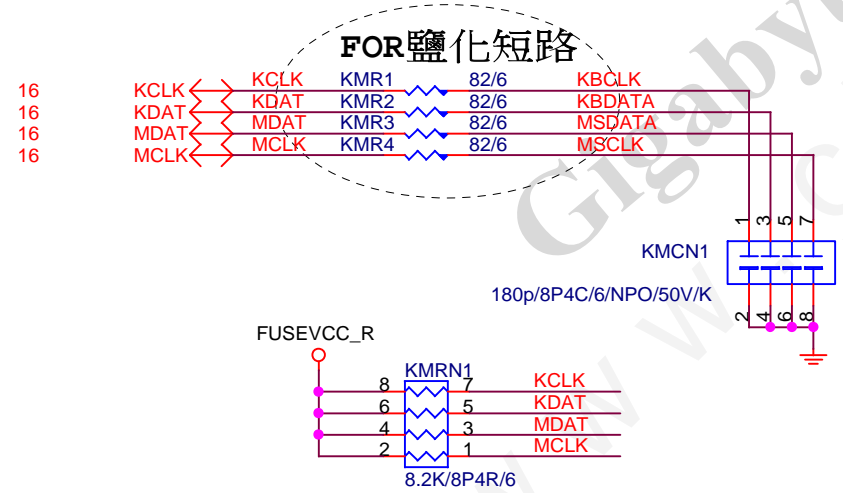
KB\_MS\_USB  
Rev: 0.7

ESD

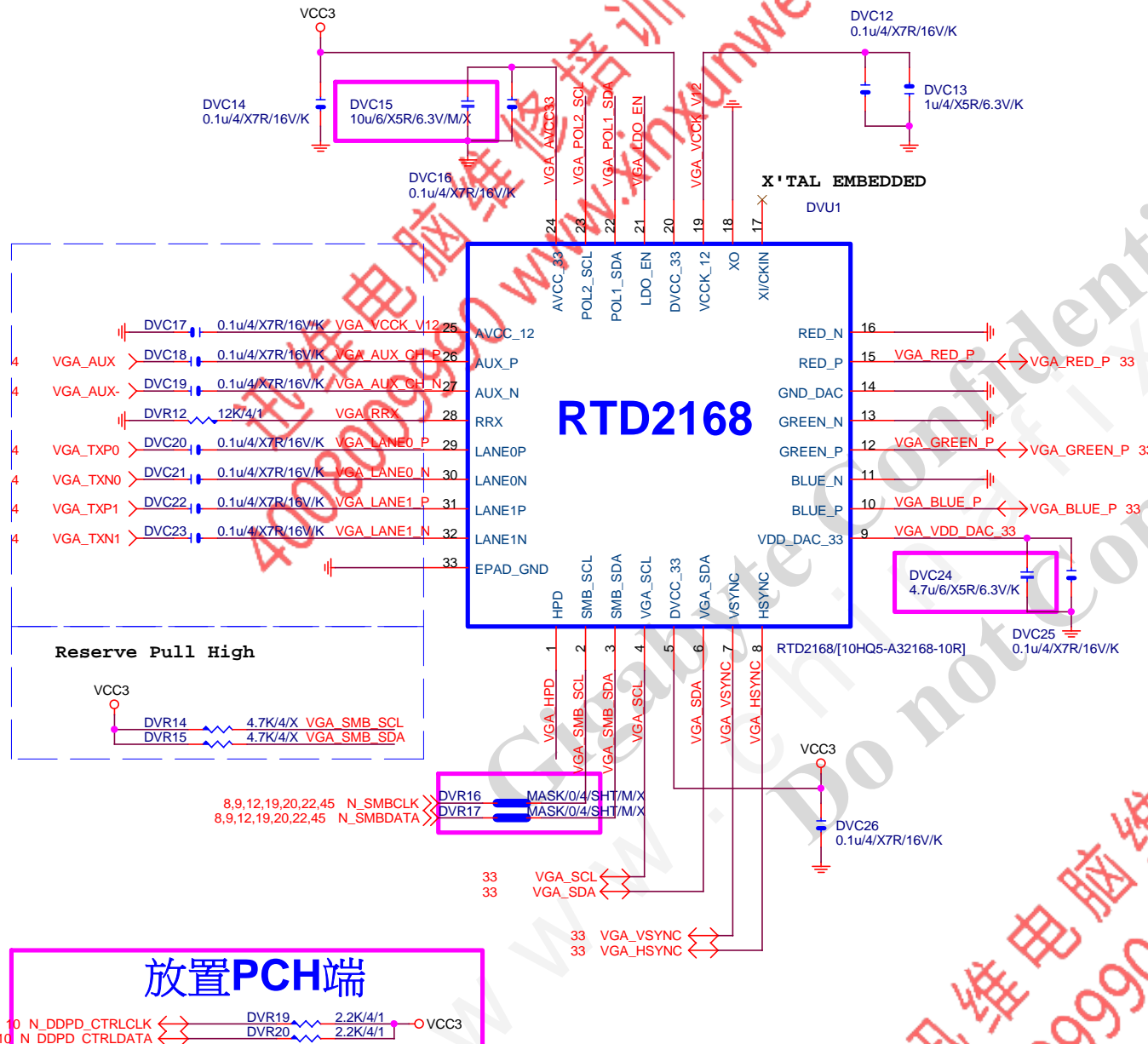


KB\_MS\_USB DAMPING/PU

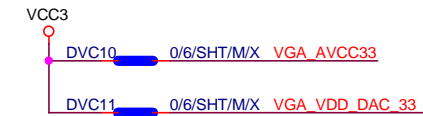
KB\_MS\_USB PWR



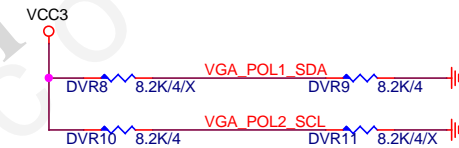
Gigabyte Technology			
Title KB_MS_USB			
Size A	Document Number	GA-H110M-WW	Rev 1.0
Date:	Thursday, July 07, 2016	Sheet 31 of 49	



## POWER

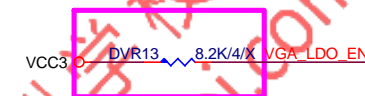


Power on latch



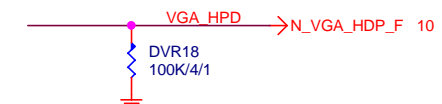
		POL1_SDA(PIN22)	
		0	1
POL2_SCL (PIN23)	0	X	EP MODE
	1	<b>ROM ONLY MODE</b>	EEPROM MODE

## Embedded LDO



LDO_EN(PIN21)	
0	1
VCCK_V12 from External 1.2V	VCCK_V12 from Embedded LDO

DP HPD



## 放置PCH端



DVR2  
2.2K/4/1DVR3  
2.2K/4/132  
32  
VGA\_SDA  
VGA\_SCLVGA\_SDA  
VGA\_SCL

32 VGA\_VSYNC &lt;-&gt; VGA\_VSYNC DVR1 33/4 G\_VSYNC

DVC2  
10p/4/NPO/50V/J/X

32 VGA\_HSYNC &lt;-&gt; VGA\_HSYNC DVR4 33/4 G\_HSYNC

DVC3  
10p/4/NPO/50V/J/X32 VGA\_RED\_P <-> VGA\_RED\_P  
32 VGA\_GREEN\_P <-> VGA\_GREEN\_P  
32 VGA\_BLUE\_P <-> VGA\_BLUE\_PDVR5  
75/4/1DVR7  
75/4/1DVR6  
75/4/1DVC4  
10p/4/NPO/50V/JDVC5  
10p/4/NPO/50V/JDVC6  
10p/4/NPO/50V/J

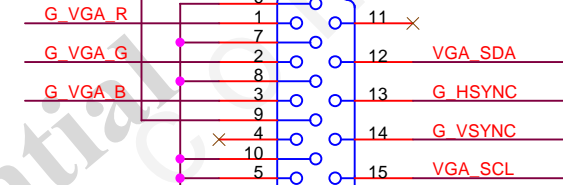
Close to Filter

DVFB1 30/4/4A/S  
DVFB2 30/4/4A/S  
DVFB3 30/4/4A/SG\_VGA\_R  
G\_VGA\_G  
G\_VGA\_BDVC7 DVC9  
DVC8  
10p/4/NPO/50V/J  
10p/4/NPO/50V/J  
10p/4/NPO/50V/J

FOR EMI

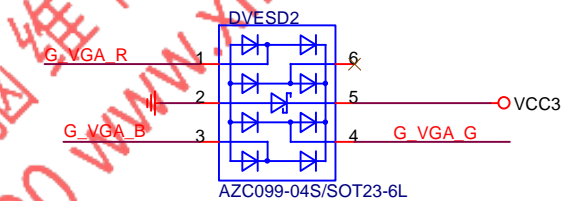
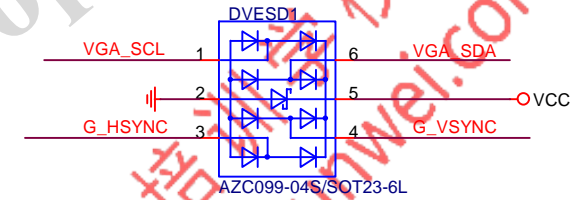
DVC1  
0.1u/4/X7R/16V/K

FUSEVCC\_R



VGA/BK/SC-11/RA/D/L

## VGA ESD



Gigabyte Technology

NXP-PTN3356

Title

Size

Custom

Document Number

GA-H110M-WW

Rev

1.0

Date:

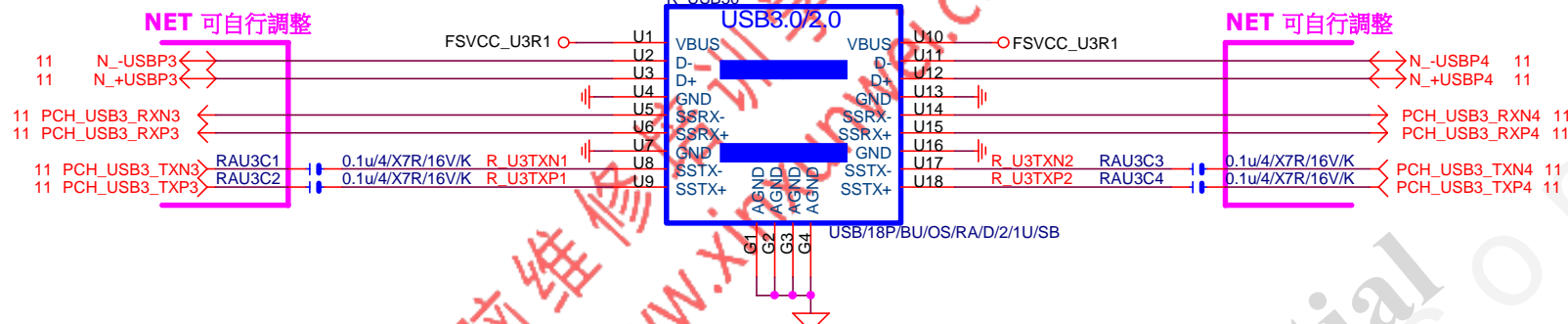
Thursday, July 07, 2016

Sheet

33

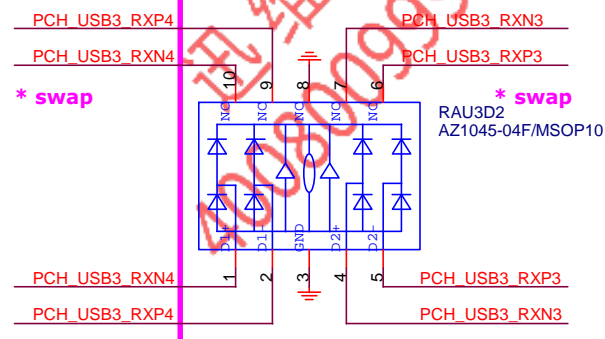
of

49

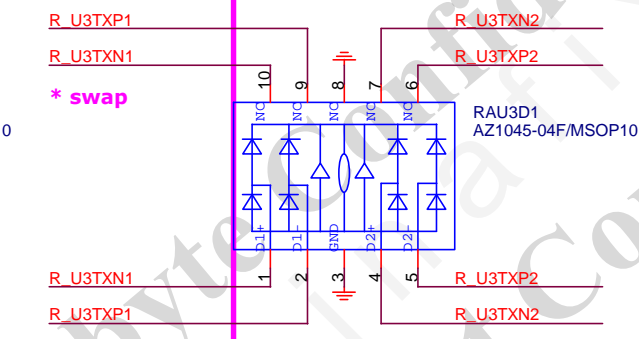


## ESD

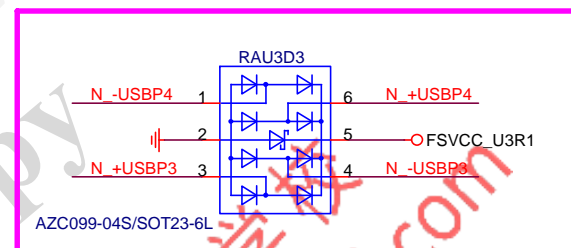
NET 可自行調整



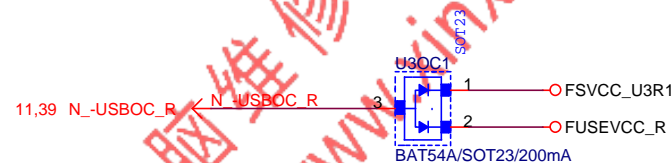
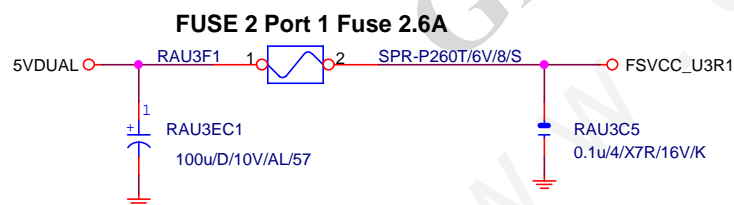
NET 可自行調整



NET 可自行調整

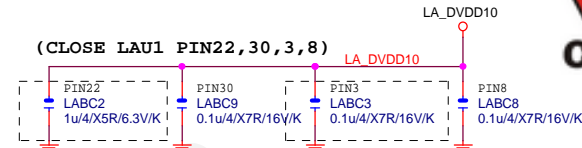
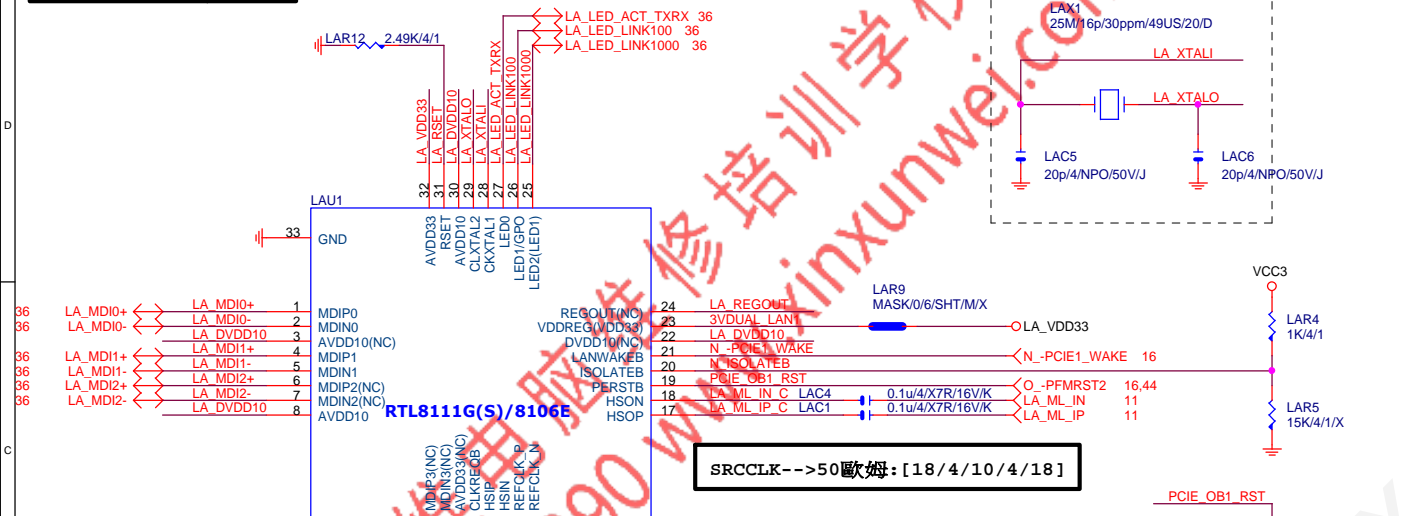


## FUSE



Gigabyte Technology

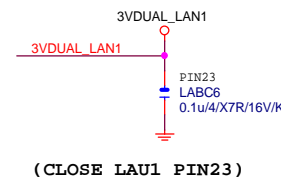
Title			
R_USB30,USB_OC			
Size	Document Number	GA-H110M-WW	
Custom			Rev 1.0
Date:	Thursday, July 07, 2016	Sheet	34 of 49



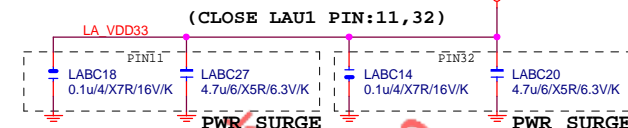
LABC2:1U CLOSE PIN22[REALTEK REQ]

## LAN POWER

note: lan power連接及電流

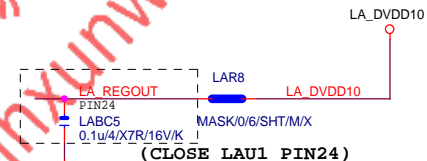


## LAN POWER



LABC18,27:CLOSE PIN11[REALTEK SURGE]  
LABC14,20:CLOSE PIN32[REALTEK SURGE]

## LAN POWER



Gigabyte Technology

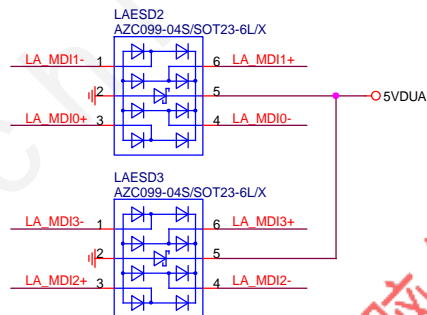
Title		
Realtek RTL8111GUS		
Size	Document Number	Rev
Custom	GA-H110M-WW	1.0
Date:	Thursday, July 07, 2016	Sheet 35 of 49

L1+CLK REQ# 節能:  
需對應LA\_SRCCLK\_LAN之CLKREQ#

離IC近越好

LA\_ML-->80歐姆:[15/5/5/5/15]

## MDI ESD預留 \*

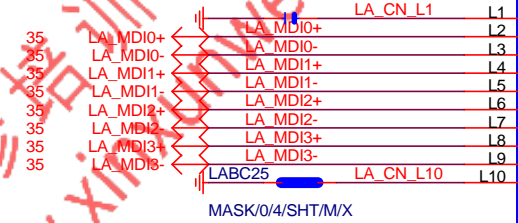
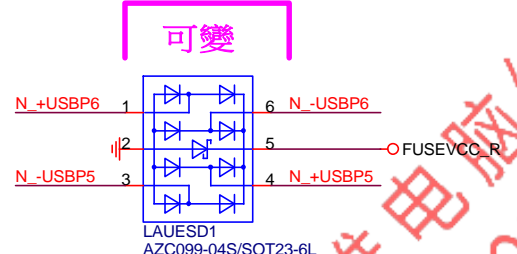


USB\_LAN CONNECTOR R1.06

USB\_LAN CONNECTOR

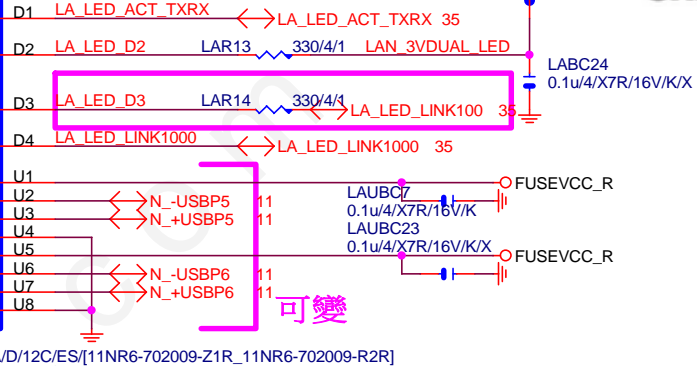
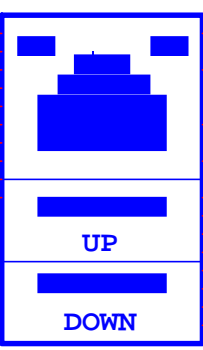
RMA ESD PROTECT

note:可變更USB NAME



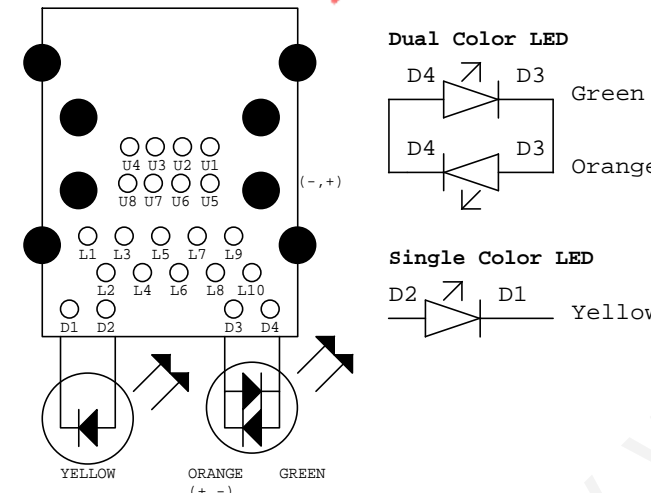
[RTL8111G]

USB\_LAN



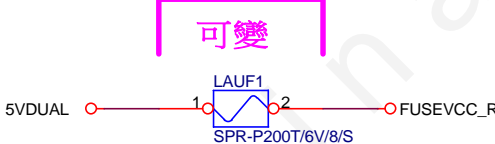
LA\_MDI-->100歐姆:[20/4/8/4/20]

USB\_LAN LAYOUT示意圖



USB POWER

note:可變更FUSE



Close to connector  
USB\_LAN 2-Port 2.0A  
FUSE-0805

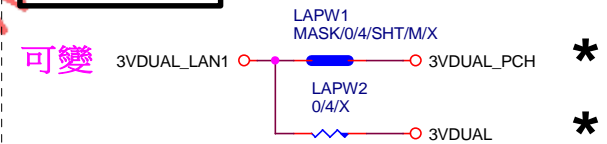
EMI SHORT PAD

PS:視EMI需求



LAN POWER

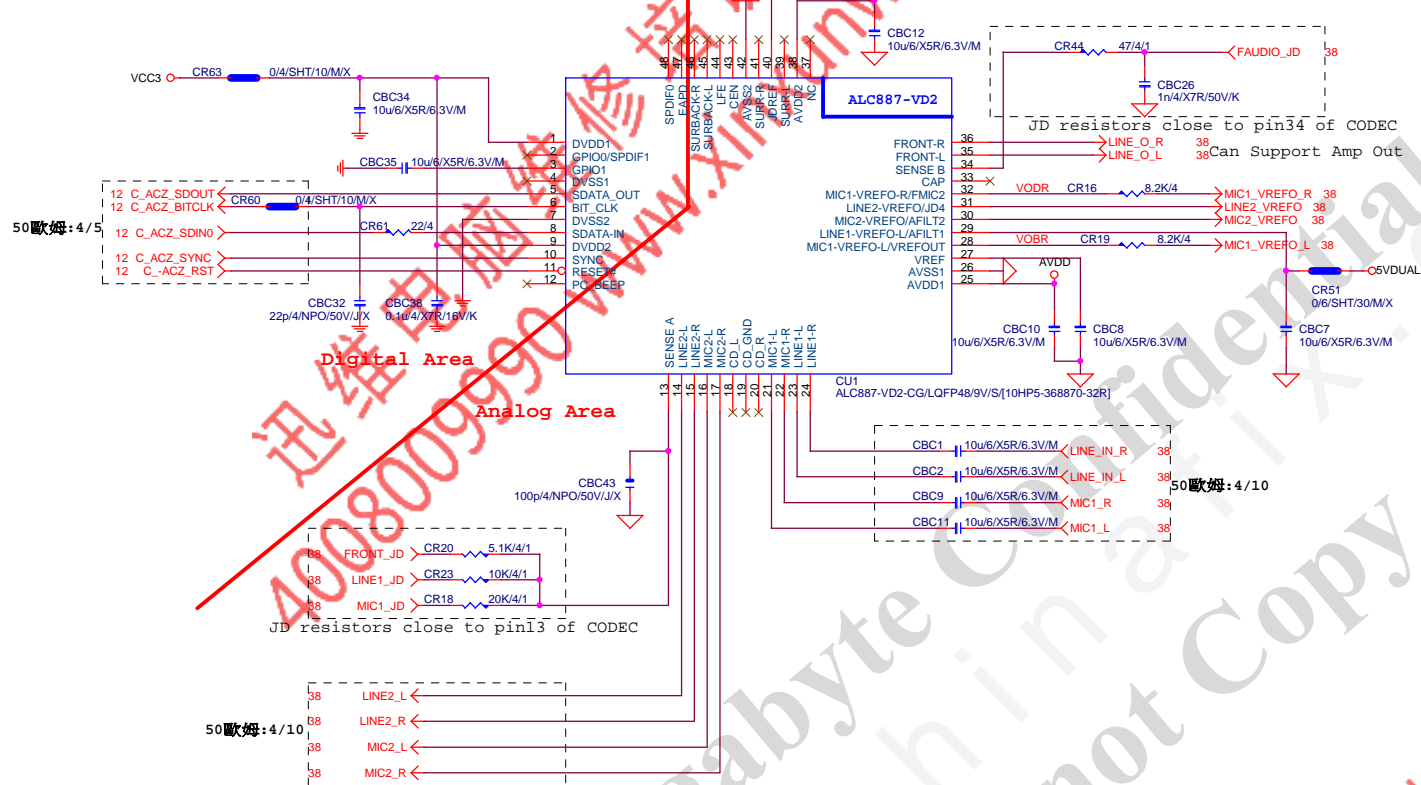
note: lan power連接及電流



<b>Gigabyte Technology</b>			
Title			
<b>LAN CONNECTOR-RTL8111G</b>			
Size	Document Number		Rev
Custom	<b>GA-H110M-WW</b>		1.0
Date:	Thursday, July 07, 2016	Sheet	36 of 49

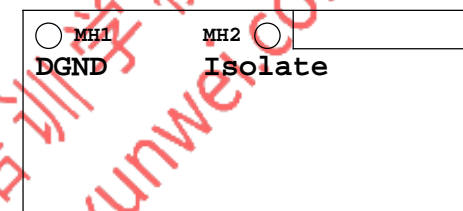


## ALC887 三孔 AUDIO JACK

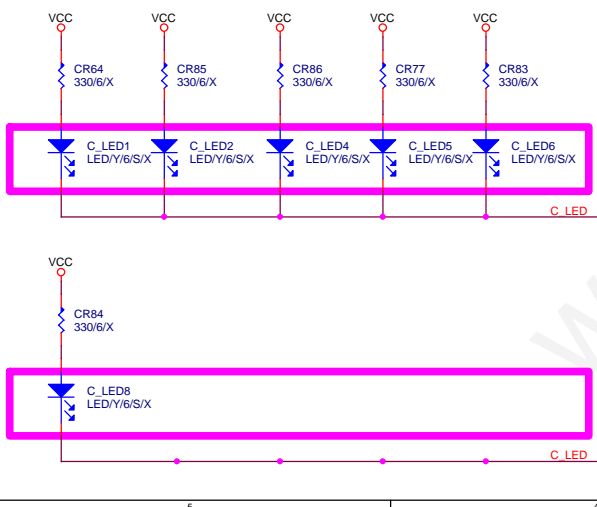


## LAYOUT注意:螺絲孔下GND方式

1. MH1空間夠,下DGND  
空間不夠,改為Isolate
2. MH2一律改為Isolate



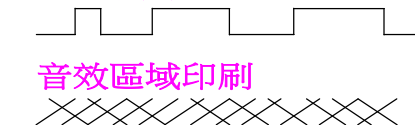
VALUE可變,LED顏色請自行修改  
(預設:低亮度黃色LED:LED/Y/6/S)




BOM OPTION : 1. Chemicon 音效電容  
2. 金屬外罩 Reserve (上件與否, 依照各Model spec)  
3. LED Reserve (上件與否和LED顏色, 依照各Model spec)

LAYOUT注意:要加

## GND切割線

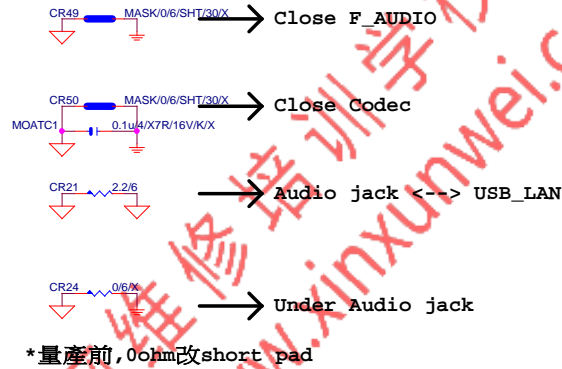


## 音效區域印刷

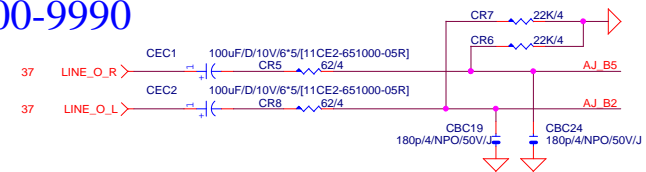
<div style="text-align: center;">  <h1 style="margin: 0;">Gigabyte Technology</h1> </div>			
<div style="text-align: center;"> <h2 style="margin: 0;">HD AUDIO ALC887</h2> </div>			
Size Custom	Document Number	<div style="text-align: center;"> <h2 style="margin: 0;">GA-H110M-WW</h2> </div>	
Date:	Thursday, July 07, 2016	Sheet	37 of 49

Rev 0.5

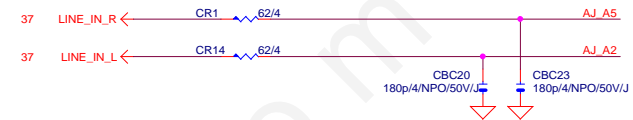
www.xinxunwei.com 400-800-9990



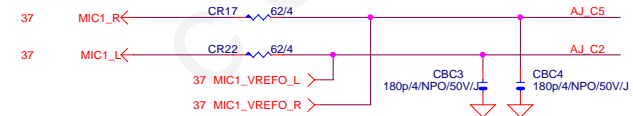
LINE-OUT



LINE-IN



MIC-IN



SURROUND

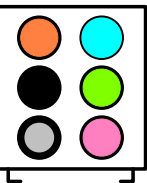
CEN/LFE

SURRBACK

SPDIF\_OUT

SPDIF\_IN

AZALIA JACK

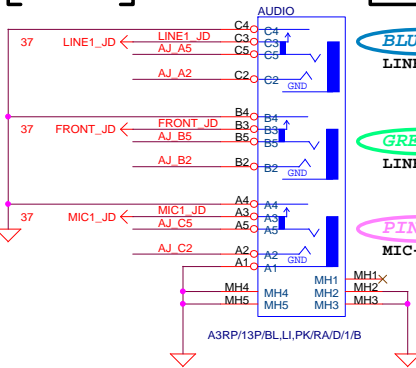


AZALIA JACK

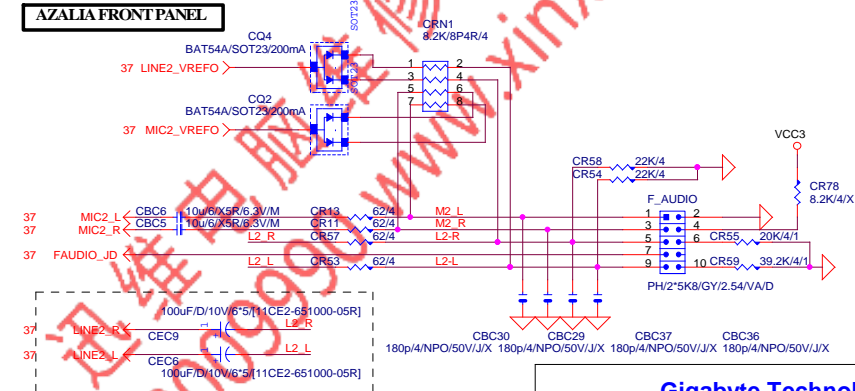
BLUE  
LINE-IN

GREEN  
LINE-OUT

PINK  
MIC-IN



AZALIA FRONT PANEL

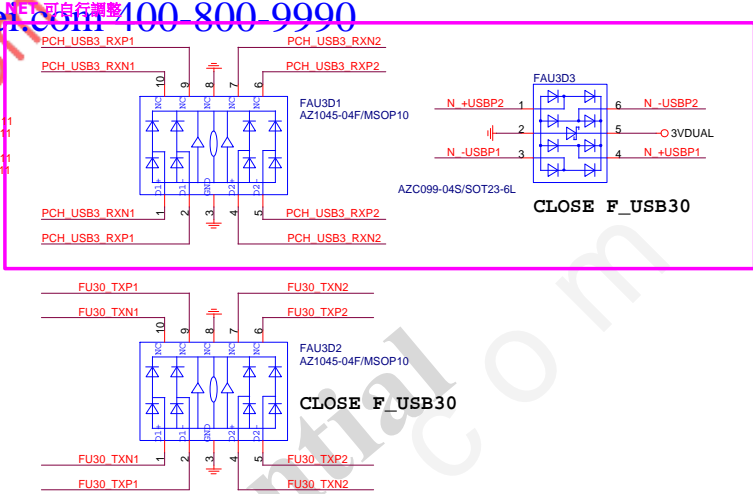
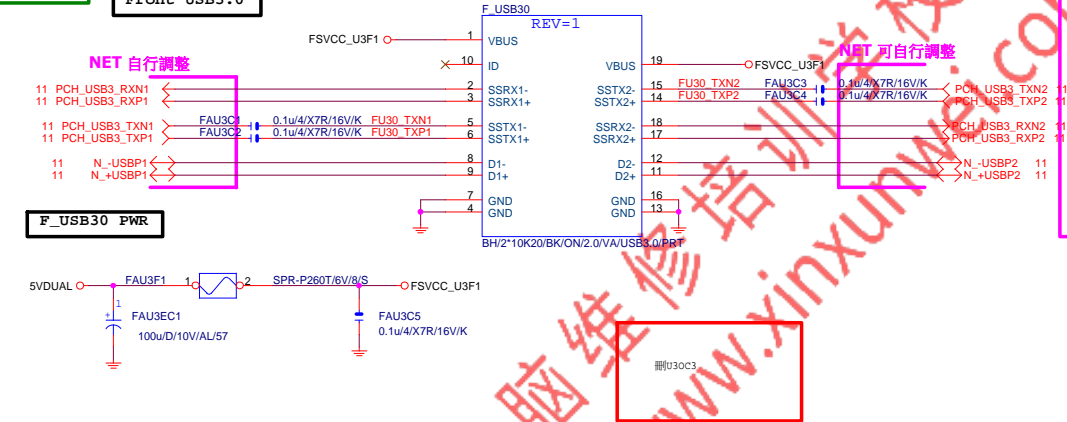


Gigabyte Technology

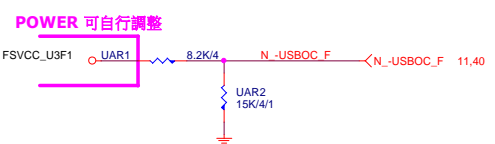
AUDIO JACK

Title	Document Number	Rev
	GA-H110M-WW	1.0
Size Custom		
Date: Thursday, July 07, 2016	Sheet 38 of 49	

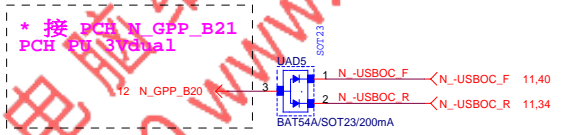
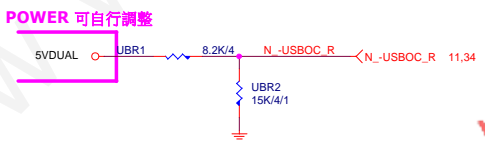
Front USB3.0



-USBOC\_F



-USBOC\_R

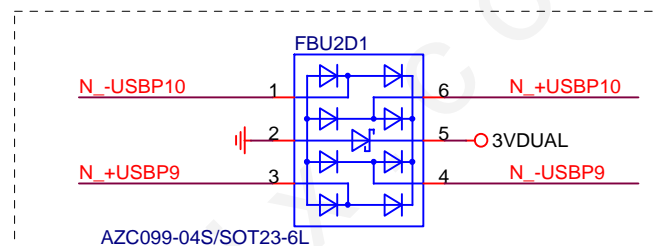
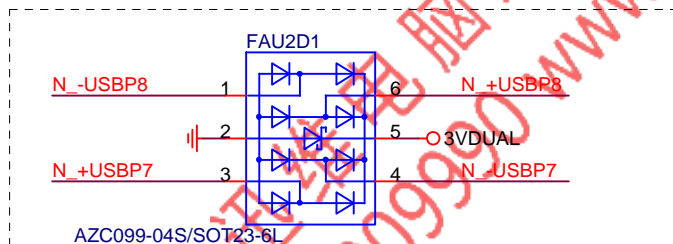
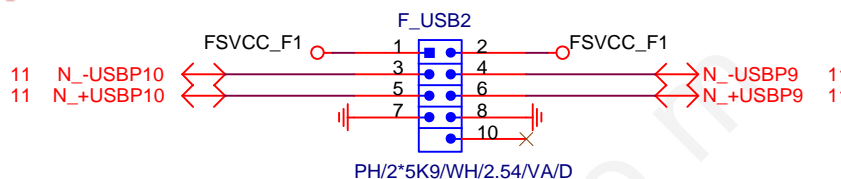
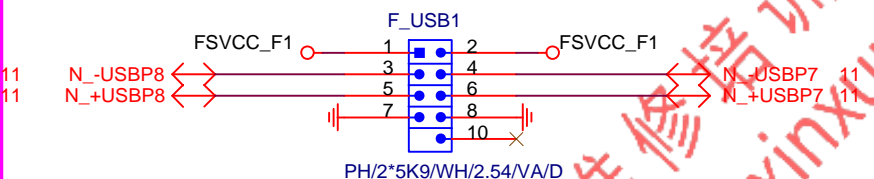


NET 可變

FUSB2X5-HS

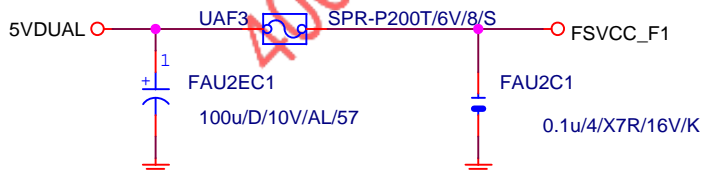
NET 可變

FUSB2X5-HS



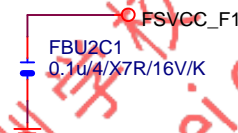
Close to connector

FUSE 2 Port 1 Fuse 2A

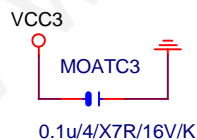
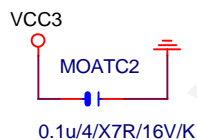
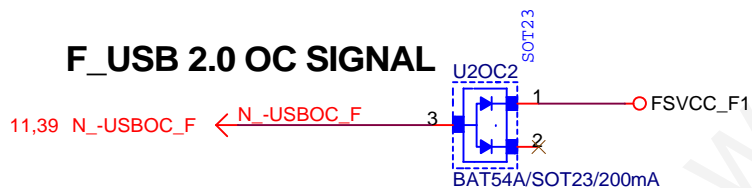


Close to connector

FUSE 2 Port 1 Fuse 2A



F\_USB 2.0 OC SIGNAL



Gigabyte Technology

Title

USB2.0

Size

Document Number

GA-H110M-WW

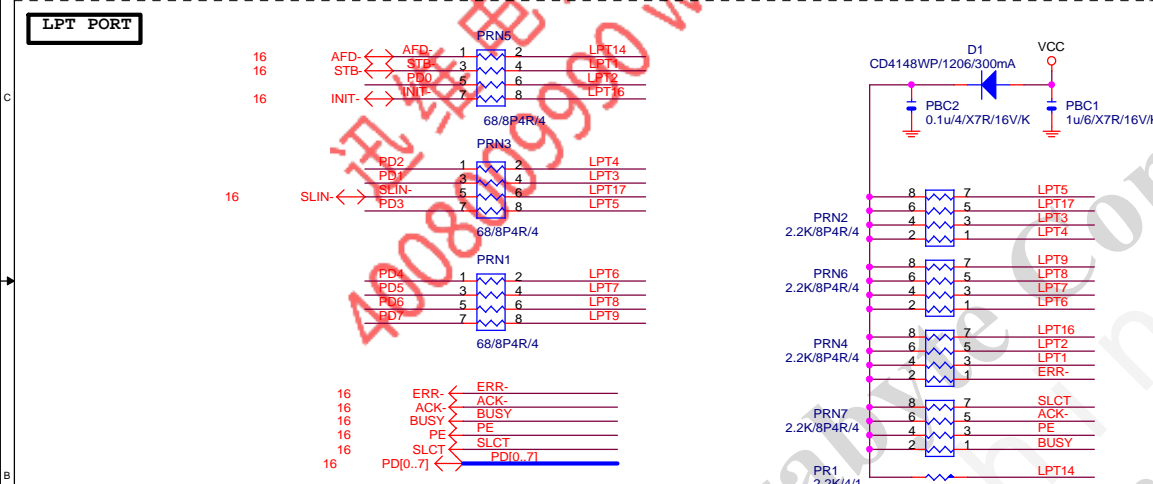
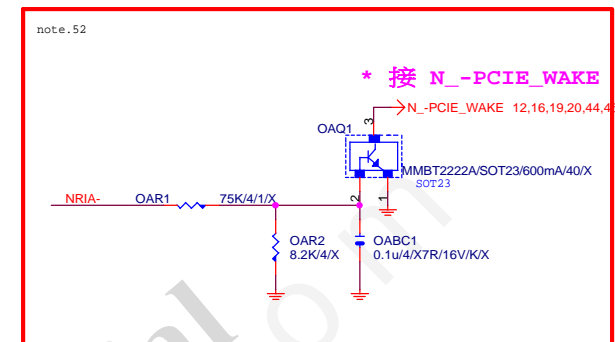
Rev

1.0

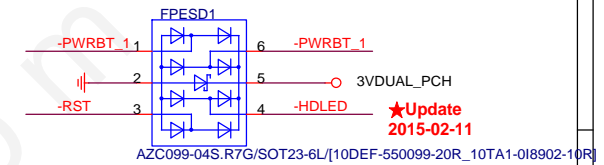
Date: Thursday, July 07, 2016

Sheet 40 of 49

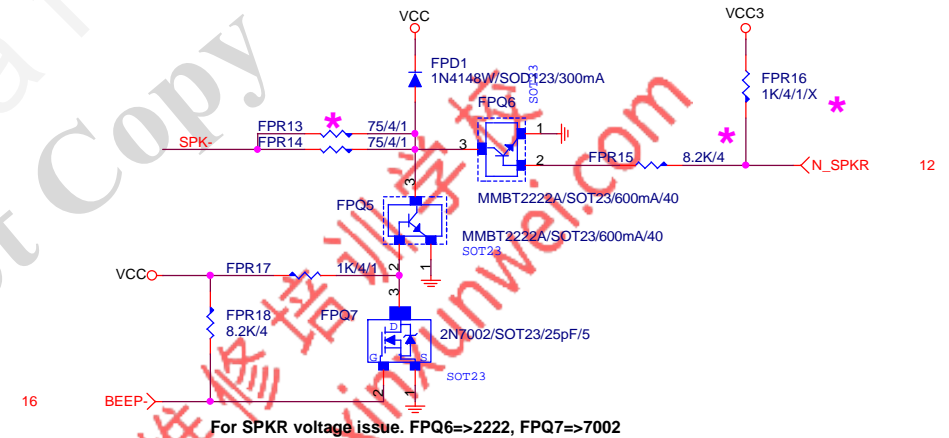




★Update  
2015-02-1  
12 N -SYS RS



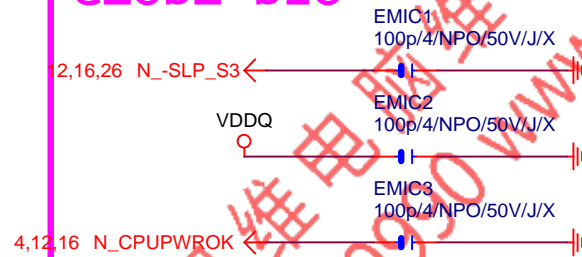
13 N\_SATALED> -HDLED



**For SPKR voltage issue. FPQ6=>2222, FPQ7=>7002**

Title			
<b>FRONT PANEL</b>			
Size Custom	Document Number	<b>GA-H110M-WW</b>	Rev <b>1.0</b>
Date:	Thursday, July 07, 2016	Sheet 42 of 49	

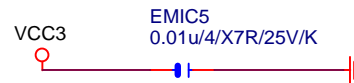
## CLOSE SIO



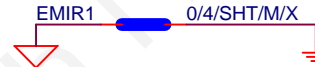
## CLOSE PCH



## close to PCH (NR17)



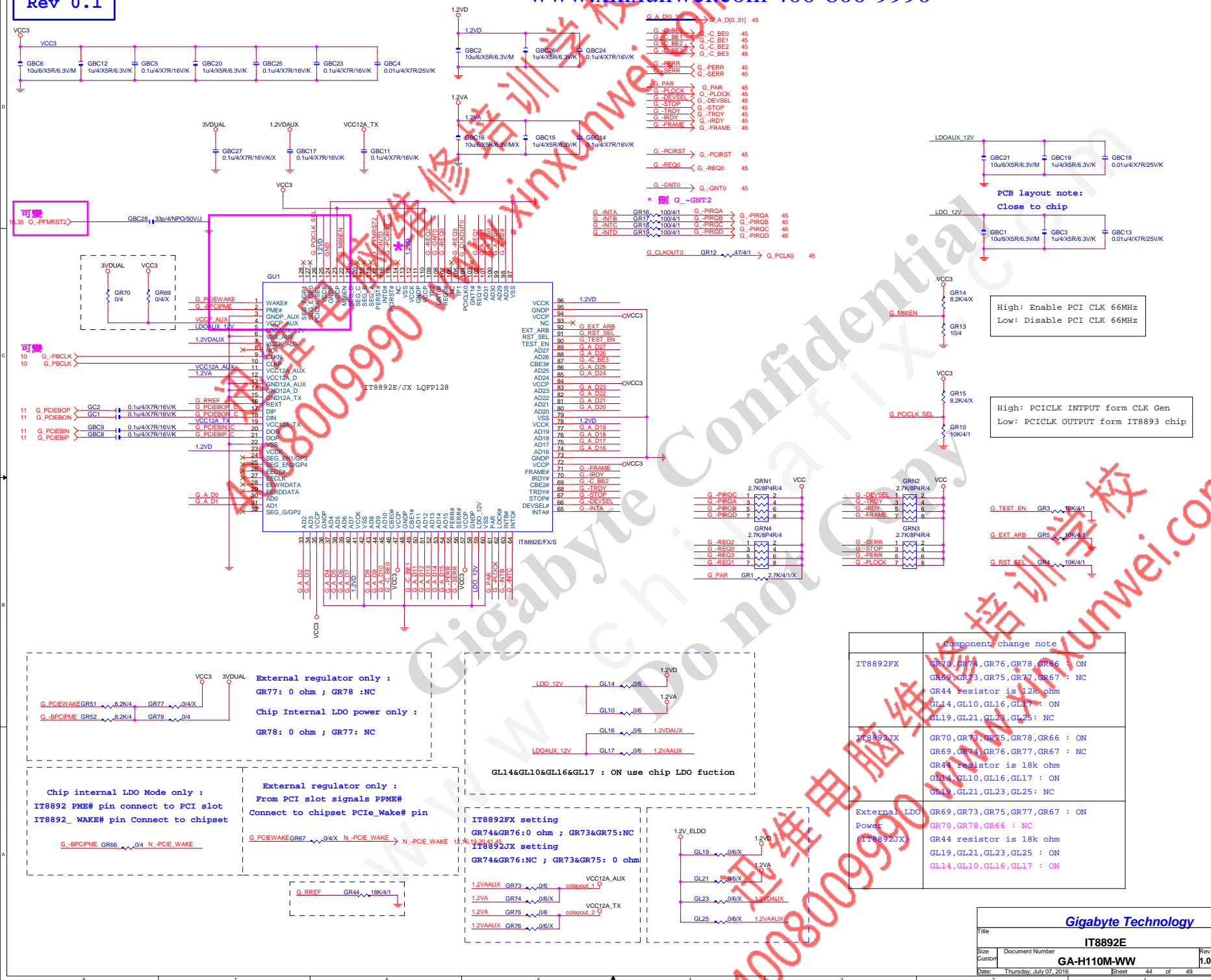
## R\_USB30\_2 &amp; DVI 之間



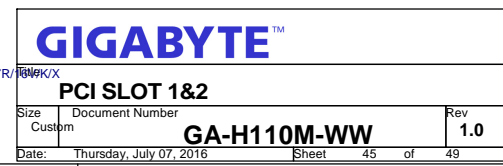
## close to SIO (PIN92)MPD-

**GIGABYTE™**

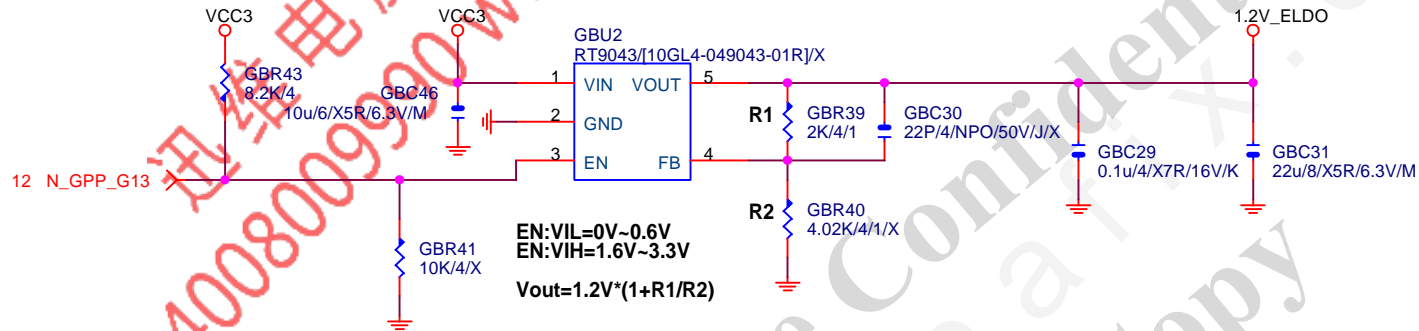
Title <b>EMI/ESD</b>			
Size A	Document Number <b>GA-H110M-WW</b>		Rev <b>1.0</b>
Date:	Thursday, July 07, 2016	Sheet 43	of 49







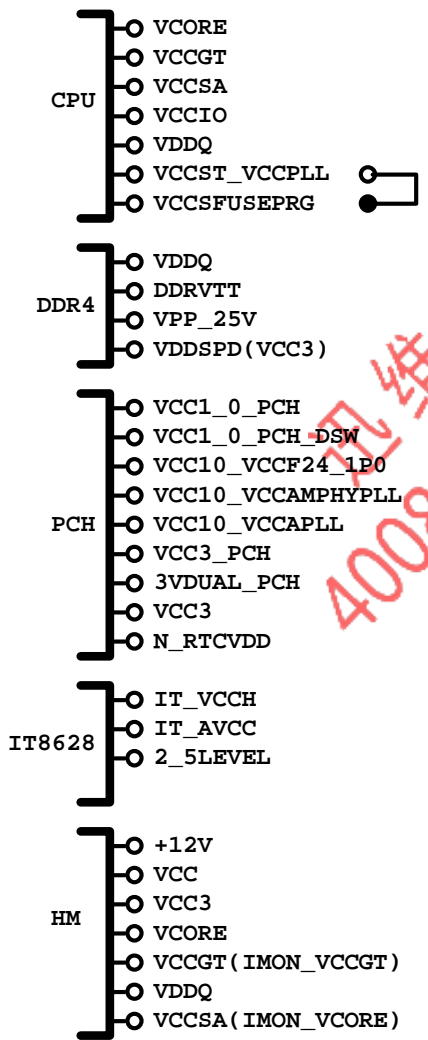
Rev 0.1



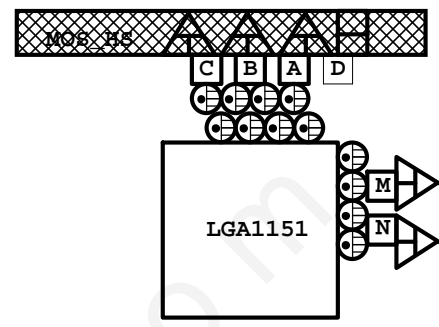
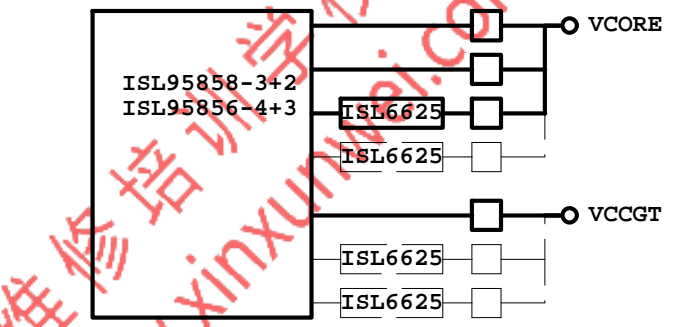
Gigabyte Technology

Title			ASM1085 POWER		
Size			Document Number		
Custom			GA-H110M-WW		
Date:			Thursday, July 07, 2016	Sheet	46 of 49
				Rev	1.0

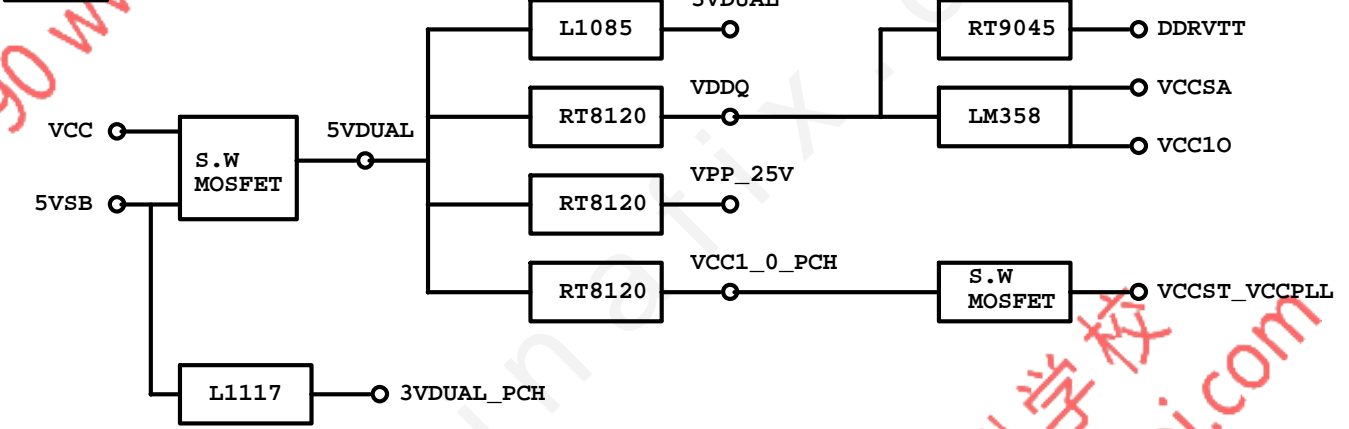
POWER BLOCK MAP



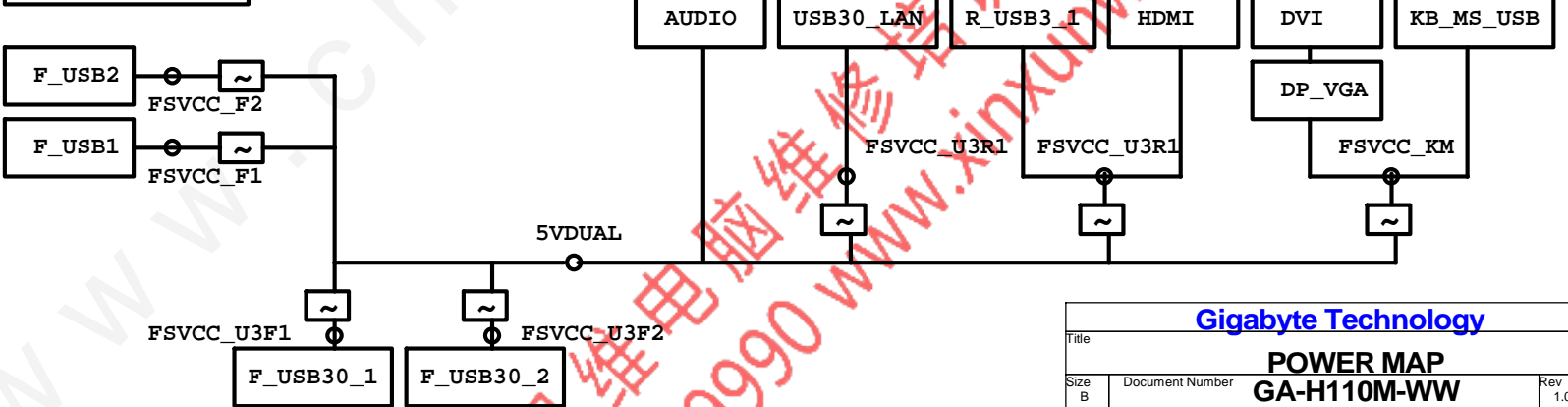
VCORE/VCCGT



POWER



FUSE POWER F/R



<div>Gigabyte Technology</div>			
Title			
POWER MAP			
Size	Document Number	Rev	
B	GA-H110M-WW	1.0	
Date: Thursday, July 07, 2016		Sheet 47 of 49	

固態電容料號.請自行修改

日系黑色固態	Capture Value
11C02-C85600-01R	560u/FP/D/6.3V/68/C/8m
11C05-C82700-01R	270u/FP/D/16V/88/C/12m
11C05-C61000-01R	100u/OS/D/16V/66/C/30m
11C02-C51000-01R	100u/FP/D/6.3V/65/C/13m

日系一般固態	Capture Value
11C02-685600-01R	560u/FP/D/6.3V/68/8m
11C05-882700-01R	270u/FP/D/16V/88/12m
11C05-661000-03R	100u/OS/D/16V/66/30m
11C02-651000-02R	100u/OS/D/6.3V/66/30m

台系固態	Capture Value
11C02-661000-09R	100u/OS/D/6.3V/66/A/35m
11C05-691000-09R	100u/OS/D/16V/69/A/35m
11C05-8C2700-09R	270u/FP/D/16V/8C/A/10m
11C02-695600-09R	560u/FP/D/6.3V/69/A/11m

IRON CHOKE

	料號	Capture Value	SIZE	Footprint
DIP	11LC5-M4500C-01R	0.5uH/40A/IMD109/M/D	10*10	CHOKE05U-40A-1PQ-3
DIP	11LC5-M2500C-01R	0.5uH/20A/IMD0809/M/D	8*8	CHOKE1U-R50M-IF

Ferrite

	料號	Capture Value	SIZE	Footprint
DIP	11LC5-F3500C-11R	0.5uH/32A/INCG109/FSI/D	10*10	CHOKE05U-40A-1PQ-3
DIP	11LC5-F2500C-11R	0.5uH/25A/INC0809/F/D	8*8	CHOKE1U-R50M-IF
SMD	未建(SIUC1007-R30M-JJ1W)		10*7	CHOKE11X8MM-SMD

BEAD

	料號	Capture Value	SIZE	Footprint
DIP	10LFB-15470A-01R	47/4030/15A/S	4*3	BEADC8B-BPH_SMD

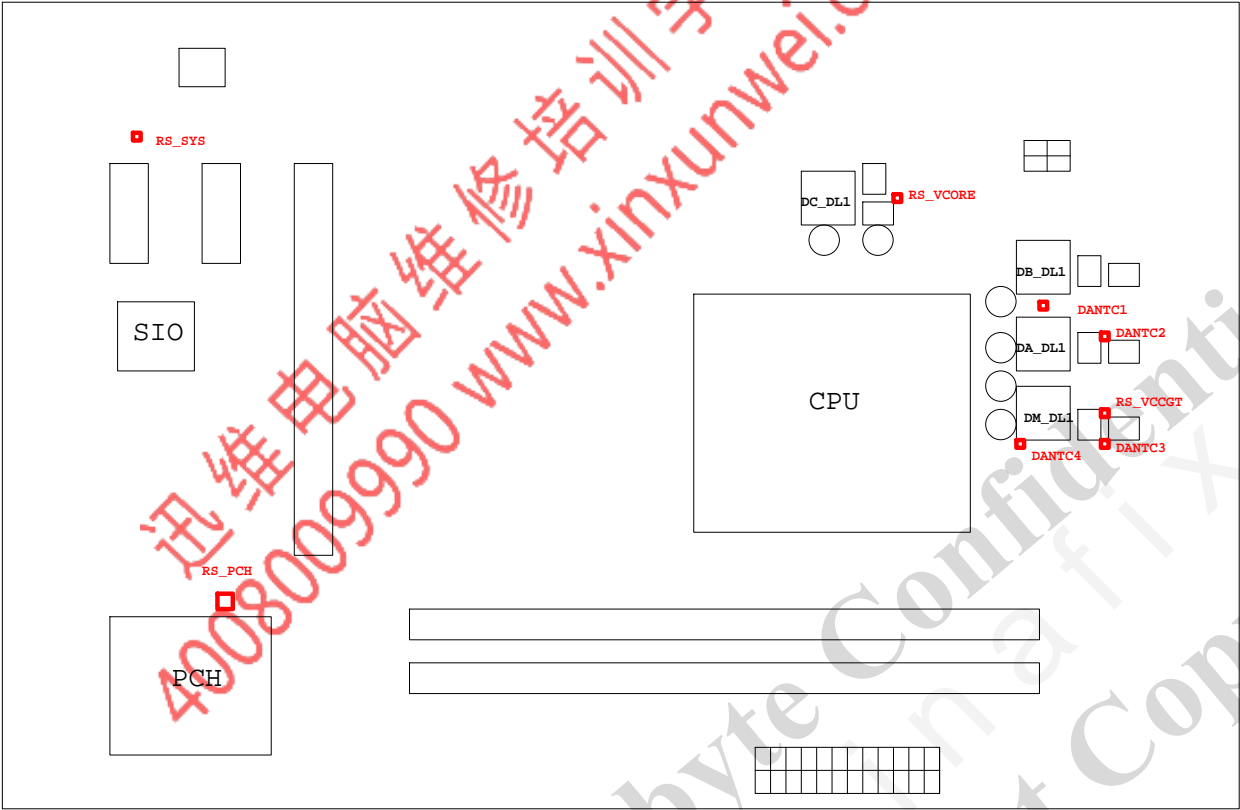
PWM料號

		料號	Capture Value	Footprint
PWM	ISL95856	10TA1-695856-01R		IC52QFN-6x6-G
PWM	ISL95858	10TA1-695858-01R		IC52QFN-6x6-G
PWM	IR35201	10TA1-635201-00R		IC56QFN-9VRS4339
PWM	IR3570	10TA1-603570-00R		IC40MLFP-ISL95835

GIGABYTE™			
Title RT8120_DDR4 POWER			
Size Custom	Document Number GA-H110M-WW		Rev 1.0
Date:	Thursday, July 07, 2016	Sheet	48 of 49







熱敏電阻	擺放靠近位置	走線方式
DANTC4	DM_DL1	Differential
DANTC1	DA_DL1	Differential
DANTC3	DM_DQ1	Differential
DANTC2	DA_DQ1	Differential
RS_VCORE	DA_DQ1	N/A
RS_VCCGT	DM_DQ1	N/A
RS_PCH	PCH	N/A
RS_SYS	CU1	N/A